



For Macromedia® Director®

Version 8.0

User Manual

Contents

Contents	2
License agreement	6
Welcome to PDF Xtra	8
Terminology	8
System requirements	8
Installation	9
First time installation	9
Upgrade installation	10
Licensing PDF Xtra for distribution	10
Entering your PDF Xtra license key	10
What's new in version 8.0	11
Release history	11
Limitations of PDF Xtra	12
Known issues	13
PDF Xtra Support Resources	13
PDF Xtra Knowledgebase	13
PDF Xtra Discussion Forum	13
INM Technical support	14
About INM	14
Customized Development Services	14
Contacting us	15
Creating PDF document sprites	16
PDF Xtra Member Options	16
File options	18
Display options	20
Global options	21
Basic concepts	22
Specifying pathnames	22
Using relative pathnames in the Link File field	22
Using absolute pathnames in the Link File field	22
Launching Acrobat or Adobe Reader	23
Windows default launch scheme	23
Mac OS X default launch scheme	23
Mac OS 9 launch scheme	24



Explicitly Launching Adobe Acrobat or Reader	24
Scenarios for delivering your project	25
What are the possible scenarios?	25
Recommended strategies for each scenario	26
1) All documents running from CD-ROM	26
2) Projector running from hard disk	26
3) Projector and Acrobat/Reader on hard disk	27
4) Projector on hard disk, PDF documents on LAN or server, using installed Acrobat/Reader.	27
Using behaviors to control PDF sprites	29
Using Lingo to control a PDF sprite	30
Errors and defensive programming	31
Delivering to the end-user	32
Playback from a projector	32
Playback from Shockwave	32
Auto-installation	33
Advanced users	34
Working with PDF forms	35
Tips and tricks	36
Detecting end-user's configuration at runtime	36
Faking transparency	37
Avoiding flicker when document opens	37
To change the PDF display settings from Acrobat 6,7 or 8:	37
To change the PDF document settings from Acrobat 5:	38
Avoiding Acrobat/Reader conflict	38
Preventing Acrobat/Reader splash screen	38
Managing a large number of PDF documents	39
Indexing and searching PDF documents	39
INM Development Services	39
Appendix 1: Lingo compatibility chart	40
PDF sprite methods	41
PDF Xtra global methods	41
Appendix 2: Methods reference	42
Sprite methods vs. global methods	42
Syntax of examples	42
PDF sprite methods	43



PDF_Close	43
PDF_Error	43
PDF_FindText	43
PDF_GetDocumentInfo	44
PDF_GetNumberOfPages	44
PDF_GetPageNumber	45
PDF_GoFirstPage	45
PDF_GetText	45
PDF_GoLastPage	46
PDF_GoPreviousPage	46
PDF_GoNextPage	46
PDF_GotoPage	46
PDF_Open	47
PDF_Print	49
PDF_Save	49
PDF_ScrollTo	50
PDF_SetDisplayMode	51
PDF_Status	51
PDF_ZoomTo	52
PDF Xtra global methods	53
PDF_AcrobatInfo	53
PDF_CloseAdobeApp	53
PDF_Help	54
PDF_LaunchAdobeApp	54
PDF_SetProgressIndicator	55
PDF_Version	55
Appendix 3: Member properties	56
PDF member properties	56
Alert	56
DisplayMode	56
DisplayOption	56
EnableUpdateFromURL	57
LinkFile	57
Page	58
Password	58
PathType	58
ScrollBars	58
ScrollH	59
ScrollV	59
Toolbar	59



UpdateFromURL	59
Zoom	60
Appendix 4: Error codes	61
Index	63

Adobe, Acrobat, Macromedia, Authorware, Director and Xtra are registered trademarks of Adobe Systems Incorporated in the United States and/or other countries. Apple, Mac and Macintosh are trademarks or registered trademarks of Apple Computer, Inc. in the United States and/or other countries. Microsoft, Windows and Windows NT are trademarks or registered trademarks of Microsoft Corporation, registered in the U.S. and/or other countries.

Other trademarks, trade names and product names contained in this manual may be the trademarks or registered trademarks of their respective owners, and are hereby acknowledged.



License agreement

PLEASE READ THIS LICENSE AGREEMENT CAREFULLY BEFORE USING Integration New Media's PDF XTRA. BY USING Integration New Media's PDF XTRA, YOU AGREE TO BECOME BOUND BY THE TERMS OF THIS LICENSE AGREEMENT.

The enclosed computer program(s), license file and data (collectively, "Software") are licensed, not sold, to you by Integration New Media, Inc. ("INM") for the purpose of using it for the development of your own products ("Products") only under the terms of this Agreement. INM and its licensors reserve any rights not expressly granted to you. INM and its licensors grant you no right, title or interest in or to the Software. The Software is owned by INM and its licensors and is protected by International copyright laws and international treaties.

1. License.

- (a) You may install one copy of the Software on a single Windows-compatible computer and one copy on a single Macintosh-compatible computer. To "install" the Software means that the Software is either loaded or installed on the permanent memory of a computer (i.e., hard disk). This installed copy of the Software may be accessible by multiple computers, however, the Software cannot be installed on more than one computer at any time. You may only install the Software on another computer if you first remove the Software from the computer on which it was previously installed. You may not sublease, rent, loan or lease the Software.
- (b) You may make one copy of the Software in machine-readable form solely for backup purposes. As an express condition of this Agreement, you must reproduce on each copy any copyright notice or other proprietary notice that is on the original copy supplied by INM.
- (c) Your license is limited to the particular version (collectively "Version") of the Software you have purchased. Therefore, use of a Version other than the one encompassed by this License Agreement requires a separate license.
- (d) The Software contains a license file (.LIC), which is subject to the restrictions set forth above and may not be distributed by you in any way. However, INM and its licensors grant you a royalty-free right to reproduce and distribute the files named "PDF Asset PPC" and " PDF Asset.X32" (collectively, "Runtime Kit") provided that (i) you distribute the Runtime Kit only in conjunction with and as part of your own Products; (ii) own a license for the specific Version of the Software that contains the Runtime Kit; (iii) agree to indemnify, hold harmless and defend INM and its licensors from and against any claims or lawsuits, including attorney's fees, that arise or result from the use or distribution of your Products with the Runtime Kit.
- (e) Any third party who may distribute or otherwise make available a product containing the Runtime Kit must purchase its own license of the Software.
- (f) Any third party who will use the Runtime Kit in an authoring environment must purchase its own license of the Software.
- (g) Notwithstanding any other terms in this License, if the Software is licensed as an upgrade or update, then you may only use the Software to replace previously validly licensed versions of the same software. You agree that the upgrade or update does not constitute the granting of a second license to the Software (i.e., you may not use the upgrade or update in addition to the software it is replacing, nor may you transfer the software which is being replaced to a third party).

2. Restrictions.

- (a) The Software contains trade secrets in its human perceivable form and, to protect them, you may not MODIFY, TRANSLATE, REVERSE ENGINEER, REVERSE ASSEMBLE, DECOMPILE, DISASSEMBLE OR OTHERWISE REDUCE THE SOFTWARE TO ANY HUMAN PERCEIVABLE FORM. YOU MAY NOT MODIFY, ADAPT, TRANSLATE, RENT, LEASE, LOAN OR CREATE DERIVATIVE WORKS BASED UPON THE SOFTWARE OR ANY PART THEREOF.



(b) THE SOFTWARE IS NOT INTENDED FOR USE IN THE OPERATION OF NUCLEAR FACILITIES, AIRCRAFT NAVIGATION, AIR TRAFFIC CONTROL, OR OTHER ENVIRONMENTS IN WHICH THE FAILURE OF THE SOFTWARE COULD LEAD TO DEATH, PERSONAL INJURY, OR SEVERE PHYSICAL OR ENVIRONMENTAL DAMAGE.

(c) You may not transfer or assign your rights under this License to another party without INM's prior written consent. Assignment application forms can be obtained from INM's sales department.

3. **Copyright notices.** You may not alter or change INM's and its licensors' copyright notices as contained in the Software. You must include a copyright notice, in direct proximity to your own copyright notice, in substantially the following form "Portions of code are Copyright ©1999-2006 used under license by Integration New Media, Inc.".

4. **Acceptance.** The Software shall be deemed accepted by you upon delivery unless you provide INM, within two (2) weeks therein, with a written description of any bona fide defects in material or workmanship.

5. **Termination.** This Agreement is effective until terminated. This Agreement will terminate immediately without notice from INM or judicial resolution if you fail to comply with any provision of this Agreement. Upon such termination you must destroy the Software, all accompanying written materials and all copies thereof, and Sections 6 and 7 will survive any termination.

6. **Limited Warranty.** INM warrants for a period of ninety (90) days from your date of purchase (as evidenced by a copy of your receipt) that the media on which the Software is recorded will be free from defects in materials and workmanship under normal use and the Software will perform substantially in accordance with the manual. INM's entire liability and your sole and exclusive remedy for any breach of the foregoing limited warranty will be, at INM's option, replacement of the disk, refund of the purchase price or repair or replacement of the Software.

7. **Limitation of Remedies and Damages.** In no event will INM, its parent or subsidiaries or any of the licensors, directors, officers, employees or affiliates of any of the foregoing be liable to you for any consequential, incidental, indirect or special damages whatsoever (including, without limitation, damages for loss of profits, business interruption, loss of business information and the like), whether foreseeable or not, arising out of the use of or inability to use the Software or accompanying written materials, regardless of the basis of the claim and even if INM or an INM representative has been advised of the possibility of such damage. INM's liability to you for direct damages for any cause whatsoever, and regardless of the form of the action, will be limited to the greater of US \$199.00 or the money paid for the Software that caused the damages.

THIS LIMITATION WILL NOT APPLY IN CASE OF PERSONAL INJURY ONLY WHERE AND TO THE EXTENT THAT APPLICABLE LAW REQUIRES SUCH LIABILITY. BECAUSE SOME JURISDICTIONS DO NOT ALLOW THE EXCLUSION OR LIMITATION OF LIABILITY FOR CONSEQUENTIAL OR INCIDENTAL DAMAGES, THE ABOVE LIMITATION MAY NOT APPLY TO YOU.

8. **General.** This Agreement will be construed under the laws of the Province of Quebec, except for that body of law dealing with conflicts of law. If any provision of this Agreement shall be held by a court of competent jurisdiction to be contrary to law, that provision will be enforced to the maximum extent permissible, and the remaining provisions of this Agreement will remain in full force and effect.

9. The parties acknowledge having requested and being satisfied that this Agreement and its accessories be drawn in English. Les parties reconnaissent avoir demandé que cette entente et ses documents connexes soient rédigés en anglais et s'en déclarent satisfaits.



Welcome to PDF Xtra

INM PDF Xtra lets you harness the power of the genuine Adobe Acrobat/Reader applications and combine it with Director's interactive and multimedia-rich environment. With PDF Xtra you can take advantage of Adobe's PDF (Portable Document Format) standard to deliver content with high-quality, precise layout and exact fonts both on screen and in print.

PDF Xtra adds new members of type PDF to your Director movie. The new members can be dragged to Director's stage and become sprites similar to other Director sprites. They can be moved and resized using standard Director authoring techniques. Members of type PDF Xtra are linked to PDF documents. Either Adobe Acrobat or Adobe Reader is required on the playback system, in order to view and print the PDF content at runtime.

Terminology

Adobe Reader refers to the free software that can be downloaded from Adobe's site.

Acrobat refers to the full version of the software that must be licensed by end-users.

Throughout this manual, *Acrobat/Reader* is used to refer to either Acrobat or Adobe Reader.

System requirements

- Windows: Windows 98/Me/NT4/2000/XP (Internet Explorer 3.0 or + must be installed).
- Mac OS 9.x, Mac OS X version 10.2.2+ (see What's new in version 8.0 and Limitations of PDF Xtra, below)
- Macromedia Director version 8.5 to MX 2004
- Adobe Acrobat 5.x, 6.x, 7.x, 8.x and/or Adobe Reader 5.x, 6.x, 7.x, 8.x



Installation

First time installation

To install PDF Xtra for authoring (i.e., in the Director application):

- 1 Make sure Director is not running.
- 2 Extract the entire contents of the PDFAsset.zip (pdfasset.sit for Mac) file to Director's **Xtras** folder. For Director MX 2004, this folder is within the "Configuration" subfolder. For previous versions of Director, the Xtras folder is right beside the Director application.
- 3 Leave the subfolder named **PDF Xtra Tutorials** within the Xtras folder for easy access to the tutorials via the Xtras > PDF Xtra Tutorials menu in Director.
- 4 Within the **PDF Xtra** folder, you will see a file named "PDF Xtra Behaviors.cst"; move this file into Director's **Libs** folder, so you can access the PDF Xtra Behaviors from Director's Library Palette.
- 5 Start Director.
- 6 Click **Xtras > PDF Xtra > Enter Key...** and enter your **username**, **company** and **key**. If you are evaluating PDF Xtra, the trial username, company and key information was sent to you in an e-mail when you downloaded the Xtra. You may obtain this trial information by clicking the link at the bottom of the PDF Xtra Download page on our web site: <http://www.PDFXtra.com/Download/>
If you have purchased a license for PDF Xtra 8, enter the information that was sent to you in an e-mail at the time of purchase.
- 7 From Director's menu bar, you may now click **Insert > Integration New Media > PDF Xtra...** to add a PDF sprite to your movie.

PDF Xtra requires that Adobe Acrobat or Adobe Reader be installed on the system on which you are authoring your Director project. At runtime Acrobat or Reader must be either be installed on the end-user's hard drive or delivered with your project on a CD-ROM. If you do not own a license for Adobe Acrobat, you and/or your customers can download the Adobe Reader free from: <http://www.Adobe.com/acrobat/readstep.html>.

Note: Before distributing any Director project with PDF Xtra 8.x, you must purchase a PDF Xtra 8 license and enter your the username, company name and license key that were e-mailed to you upon purchasing the Xtra. See [How to register PDF Xtra](#).



Upgrade installation

- 1 Make sure Director is not running.
- 2 Remove all old versions of the Xtra ("PDF Asset.x32" on Windows; "PDF Asset PPC" on Mac), and old versions of the PDF Xtra Behaviors.cst from the Libs folder.
- 3 Follow the steps for [First time installation](#).
- 4 The first time you open a movie that was created using a previous version of PDF Xtra, you will see a warning message to let you know that you may have to modify your movie to work with PDF Xtra 8. Please see [What's new in version 8.0](#) to know what has changed.

Note: PDF Xtra 8.0 is not a free upgrade. If you already own a PDF Xtra license, you need to purchase an upgrade license and enter your the username, company name and license key that were e-mailed to you upon purchasing the Xtra. See [How to register PDF Xtra](#).

Licensing PDF Xtra for distribution

The free evaluation version of PDF Xtra (Trial version) contains all the functionality of the licensed version, except that it displays a **Not Licensed for Distribution** splash screen every time it loads a sprite of type PDF at runtime. In order to ship a product containing PDF Xtra you must purchase a license.

Please make sure to read and agree to the License Agreement (see License agreement) before purchasing your PDF Xtra license.

To purchase a license:

Visit our online store:

<https://store.INM.com/>, or

Call us:

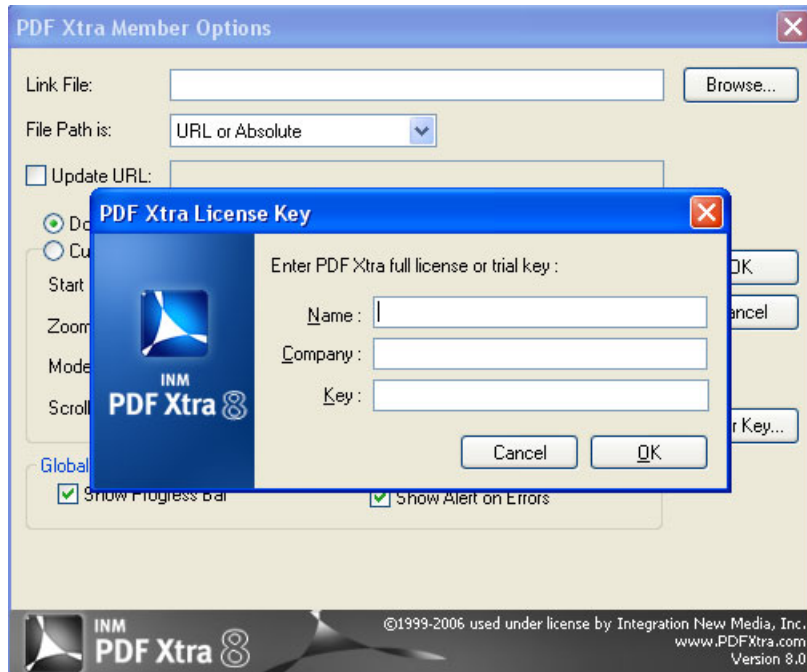
+1 800 400 1772 (North America) **or** +1 514 871 1333, Option 5.

Entering your PDF Xtra license key

Once you have purchased a license, you need to enter the license key once in your PDF Xtra movie and then save the movie. This will prevent the **Not Registered** splash screen from appearing during playback. Follow these steps to enter the license key:

- 1 Double click a PDF Xtra member in the cast to open the **PDF Xtra Member Options** window.
- 2 From that window, click **Enter Key...**
- 3 Enter the name of the license owner, the name of the company and the license key that is e-mailed to you upon purchase of the license. We recommend you copy/paste this key to the Registration window directly from the e-mail.





Enter your PDF Xtra license key

What's new in version 8.0

New features

- PDF Xtra now supports Adobe Acrobat 8 and Adobe Reader 8, in addition to versions 5.x – 7.x.

Release history

Look for details of the new features of this version, as well as release notes from previous versions, in the **Release History** pages of the PDF Xtra section on our web site:

<http://www.INM.com/support/pdfdirector/release-history/>.



Limitations of PDF Xtra

PDF Sprites act as any other Director sprite. You can move them, resize them, right-mouse-button-click (Windows) or Control-click (Mac OS) them, etc.

PDF sprite limitations

- They are drawn DirectToStage, so other objects cannot be placed on top of them.
- They do not react to transitions.
- They cannot be rotated, skewed, blended or assigned an ink.
- PDF sprites cannot receive mouse events such as `mouseUp`, `mouseDown`, etc.; the only event you can script for a PDF sprite is “on beginSprite”.

Platform and application – specific limitations

Since PDF Xtra relies on Acrobat or Adobe Reader for display management, it automatically inherits features such as:

- There cannot be multiple copies of the same PDF document open at the same time, whether through PDF Xtra or directly in Acrobat/Reader.
- Not all features are available or supported identically on Mac/Acrobat, Mac/Reader, Win/Acrobat and Win/Reader. PDF Xtra tries to standardize those features as much as possible, but some differences remain. See PDF Xtra Member Options and Appendix 1: Lingo compatibility chart.
- `PDF_LaunchAdobeApp(#Acrobat)` cannot be used by a Shockwave movie on Windows; if the `#Acrobat` option is specified, PDF Xtra will return an error. However, `PDF_LaunchAdobeApp(#Default)` can launch the Reader Active-X component which is installed with both Adobe Reader and Acrobat. As long as the default launch scheme is used, your project will be able to run in Shockwave.
- Links between PDF documents are not supported.
- PDF form fields will only import/export data to local FDF files in Acrobat – not Reader.
- The PDF sprite will flicker if used in 256-color mode, due to a palette conflict between Acrobat/Reader and Director. Higher color modes work fine.
- On Mac Classic OS, when `PDF_LaunchAdobeApp(#Acrobat)` is used, the only methods supported are: `PDF_CloseAdobeApp()`, `PDF_Open()`, `PDF_Close()`, `PDF_Print()`, `PDF_GetDocumentInfo()`, `PDF_GetNumberOfPages()`, `PDF_Error()`, `PDF_Status()`. This is due to a limitation of Acrobat.
- PDF Xtra does not support files of type Forms Data Format (FDF). If you need to support PDF forms, try [INM Impresario Xtra](#).



Additional limitations for using PDF Xtra on Mac OS X

- The technology available from Adobe is significantly different in Acrobat/Reader on Mac OS X from previous versions available for Mac Classic OS. Therefore, PDF Xtra opens PDF documents in a separate Adobe application window, as opposed to within the Director stage.
- On Mac OS X, because PDF documents are opened in a separate application window, they cannot be controlled using the PDF Xtra Lingo methods or the PDF Xtra behaviors. The only methods supported on Mac OS X are PDF_Open() and PDF_GetAcrobatInfo(). The user must close Acrobat/Reader and return to Director after viewing each document.
- On Mac OS X, PDF documents will always open with the "Initial View" settings they had when last saved in Acrobat.
- On Mac OS X, PDF Xtra cannot open a PDF document from a URL.
- On Mac OS X, PDF Xtra cannot launch a specific version of Adobe Reader from CD-ROM; the default application associated with PDF documents on the user's system is the one that PDF Xtra launches.

Known issues

Integration New Media works extremely hard to ensure that the PDF Xtra is bug-free and stable. If you are aware of any issues not listed, please contact us by e-mail at: Support@INM.com.

PDF Xtra Support Resources

INM offers a variety of technical support options to help you while working with INM PDF Xtra.

PDF Xtra Knowledgebase

The PDF Xtra knowledgebase contains a wealth of information gleaned from the most common support cases we have received over the years. Search this knowledgebase before contacting INM support to see if your issues are documented.

<http://support.INM.com/>

PDF Xtra Discussion Forum

This is an entire discussion forum devoted to PDF Xtra and related topics. Here, PDF Xtra users can exchange tips, share experiences, suggest new features, etc. New announcements concerning PDF Xtra are also posted in this forum. You can subscribe to the PDFXtra forum by visiting:

<http://forums.INM.com>



INM Technical support

The PDF Xtra Knowledgebase and Discussion Forum are the best places to get support and benefit from the experience of a large number of PDF Xtra users.

If you need further assistance or personal attention, our Technical Support team is pleased to help you. The best way to contact technical support is by filling out our online support form at:

<http://support.INM.com>

Licensed users are given priority status when contacting Technical Support.

About INM

Integration New Media (INM) specializes in the development of cross-platform software components for multimedia applications and on-line communication networks. INM offers a wide range of products, solutions and services related to multimedia applications.

Our Home Page is located at: <http://www.INM.com/>

We develop high-quality products, such as INM VizionDB (formerly V12 Database Engine), INM Impressario, INM GoldenGate Database Connector, INM SecureNet Xtra and INM PDF Xtra.

Customized Development Services

We also offer customized services at various levels, including:

- **Programming Services:** With expertise in Director, Authorware, C++, Java, Flash programming, Visual Basic, and ASP, our software engineers can provide you with the programming support you need, while remaining completely behind-the-scenes.
- **Turnkey Solutions:** We have the experience and expertise to manage and develop entire new media projects from concept to completion.
- **Custom Xtras:** With our years of experience and proven track record, we are sure to develop the right custom Xtra for your Director or Authorware project.
- **Emergency Assistance:** We can provide emergency assistance for questions and / or issues that are specific to your project.

For further information about our services, please contact our Sales team.



Contacting us

We encourage you to contact us with questions, comments or feedback.
We can be reached at:

Integration New Media, Inc.

1600 Rene-Levesque West, Suite 900

Montreal, Quebec, Canada H3H 1P9

Phone: +1 514 871 1333, Option 5
+1 800 400 1772 (North America)

Info: Info@INM.com

Sales: Sales@INM.com

Support: <http://support.INM.com>

Web: <http://www.INM.com/>
<http://www.PDFXtra.com/>

Online store: <https://store.INM.com>



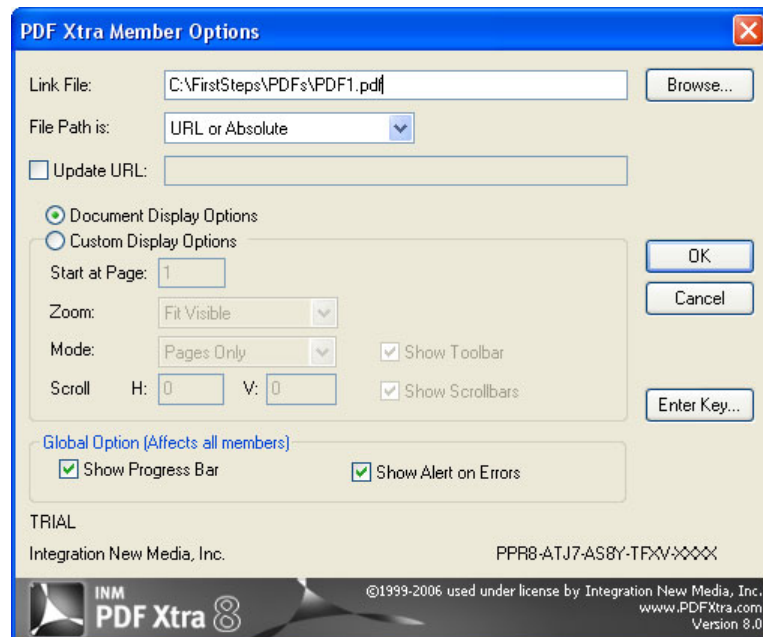
Creating PDF document sprites

Steps to create a PDF document sprite:

- 1 Choose **Insert > Integration New Media > PDF Xtra**.
- 2 The PDF Xtra Member Options dialog box opens.
- 3 Optionally, assign a file name and initial display values to your PDF Sprite. If you skip this step, you can still assign a link file name and get/set the sprites properties via scripting. Note that all of the options in this window are NOT supported identically on Mac OS and Windows, nor in Adobe Acrobat and Adobe Reader.
- 4 Drag the PDF Xtra member to the stage and resize the sprite rectangle to the desired dimensions.
- 5 Run your Director project. Your PDF should open in the highest numbered version of Adobe Reader or Acrobat available on your computer.

PDF Xtra Member Options

The PDF Xtra Member Options dialog box appears when you double click a cast member or sprite of type PDF, when you click the **Options** button in the Cast Member Properties dialog, or when you click the **More Options...** button in Director's Property Inspector. It is used to specify the PDF file to display and to set its initial display properties.



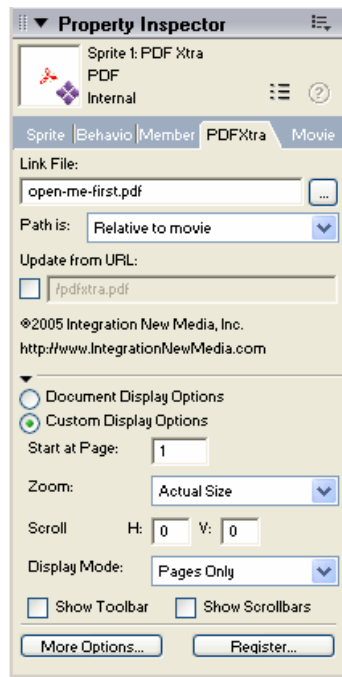
PDF Xtra Member Options dialog box



The display options in this dialog box control the PDF member properties. Therefore, the last settings in effect when you save your movie are the ones that appear in the PDF Xtra Member Options dialog when you open the movie later.

Note: Not all of the properties in the PDF Member Options box are supported identically on Mac OS and Windows, or on Acrobat and Adobe Reader. See Appendix 1: Lingo compatibility chart, or the Compatibility Matrix on our web site for details.

Most of these settings can also be changed from the Property Inspector.

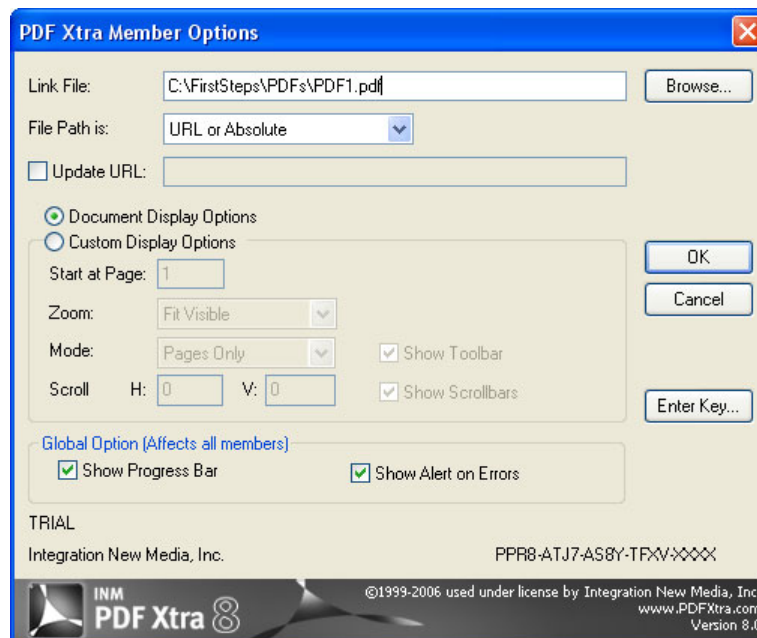


PDF sprite property inspector

Note: All of the PDF Xtra options, with the exception of: *Show Alert on Error* can also be changed during playback. PDF Xtra has a Lingo interface that you can use to dynamically control how your PDF files are displayed. See [Appendix 2: Methods Reference](#) and [Appendix 3: Member properties](#).



File options



Link File: Specify the location of the PDF file to display. Type in the path and file name, or use the Browse option to locate the file you wish to use.

Path is: Specify the file path type. This lets you tell PDF Xtra how to interpret the path specified in the Link File field. Possible choices are:

- *URL or Absolute:* PDF Xtra interprets the contents of the Link File field as being a fully qualified path or a URL.

Examples:

C:\Cool Project\MyDoc. PDF -- Mac and Windows
http://www.PDFXtra.com/manual.pdf -- Mac and Windows
C:\Cool Project\MyDoc. PDF -- Windows only
D:\eHard: Cool Project: MyDoc. PDF -- Mac OS only

If you choose “Browse” and then select a file, the full pathname will be filled in for you.

If your projector is installed on the user’s hard drive, but your PDF documents reside on a CD-ROM use the URL or Absolute File Path and include the <CD-ROM> tag at the beginning of the partial path. PDF Xtra attempts to locate the PDF files on any local CD-ROM drive, without your needing to know the drive letter.

Example:

<CD-ROM>/MyPDFDocs/FirstDoc. pdf -- Mac OS and Windows

Note: For playback from Shockwave, you must use the URL or Absolute file path type.

- *Relative to Movie:* PDF Xtra interprets the contents of the Link File field as being relative to the location of the Director movie. You usually select “Relative to Movie” if your PDF files are within the same directory as your



Director movie.

Examples:

If MyMovie.dir, is located in directory root/, and the Link File is PDFDocs/MyDoc.pdf then PDF Xtra searches for the file in the directory root/PDFDocs/.

Similarly, if the Link File is. ./PDFDocs/MyDoc.pdf, then PDF Xtra looks for a sibling directory called PDFDocs/

Update from URL: If you want the application to automatically download the most recent version of the PDF file from a URL, check this box and specify the file's location on the Internet. When the PDF document is opened, PDF Xtra verifies if the specified remote file has a more recent date or has a different file size from the local file (specified in the Link File field). If the local file is older, it is replaced by the updated one and the new file is opened. Otherwise, the local file is opened.

The Update from URL check box must be checked in order to verify the specified URL. The URL may contain the specific filename, or just a URL path. If the actual filename is not specified, PDF Xtra uses the filename used in the Link File field.

Example with just the URL path, and no filename:

Link File: D:\Projects\Docs\MyDoc.pdf

Update from URL: <http://www.PDFXtra.com/>

PDF Xtra will update the document with: <http://www.PDFXtra.com/MyDoc.pdf>

Example specifying the filename:

Link File: D:\Projects\Docs\MyDoc.pdf

Update from URL: <http://www.PDFXtra.com/MyNewDoc.pdf>

PDF Xtra will use the exact file URL specified:
<http://www.PDFXtra.com/MyNewDoc.pdf>

If the local file is located on a CD-ROM, the updated Internet file is downloaded to the system temp folder and opened from this location. The temporary file is deleted when the document is closed.

If the URL specified contains a different document name than the original Link File, this file will be renamed with the original file's name when it is downloaded.

Note: The "Update from URL" feature cannot be used for password-protected documents.



Display options

Document Display Options: If this option is selected PDF Xtra will use the document display options that are saved directly in the PDF document. When this option is selected, PDF Xtra opens the document as it was last configured in Acrobat and the Custom Display Options are ignored. This is the most common way of working with PDF documents and gives the best results across all end-user configurations.

Custom Display Options: If this option is selected, PDF Xtra will use the following custom display options: start at page, zoom, scrolling, display mode, toolbar, and scrollbars.

Note: When Custom Display Options differ from the document's default display settings the document might flicker when it is first opened. To avoid this, it is recommended to set up the desired Initial Display Settings in Acrobat before saving your PDF.

Start at Page: Specify the page number of the PDF Document from which you would like it to open when displayed.

Zoom: Specify the initial zoom factor at which the document will open. This is either an integer in the range 8..1600 (percentage), or one of Fit in Window, Actual Size, Fit Visible, or Fit Width.

Scroll H/V: Specify the number of pixels to scroll the PDF document horizontally (H) and vertically (V) in the sprite upon opening it. Usually, scrolling the document by 5, 5 at Actual Size helps suppressing the gray background Acrobat displays behind the document.

Display Mode: Select how you want the initial display of the document to appear:

- *Pages Only:* Displays just the contents of the document.
- *Bookmark and Pages:* Displays the page and the Bookmarks tab.
- *Thumbnail and Pages:* Displays the page and the Thumbnails tab

Show Toolbar: Show/hide Acrobat/Reader's standard toolbar at the top of the PDF Xtra sprite.

Show Scrollbars: Show/hide horizontal and vertical scrollbars to scroll the document displayed by PDF Xtra.

Note: If the PDF_LaunchAdobeApp(#Acrobat) method is called, the Toolbar cannot be displayed without Scrollbars; if the Toolbar is present, scrollbars will be displayed. If the Toolbar is hidden, Scrollbars can be shown or hidden independently.

If the default PDF Xtra launch sequence is used, the toolbars and scrollbars can both be displayed or turned off independently.

If Toolbar and Scrollbars were turned off in the Acrobat application when saving the PDF, they can not be turned on by PDF Xtra.



Global options

The global options affect all the PDF cast members in your movie, not just the currently selected cast member.

Show Alert on Error: If checked, PDF Xtra displays an error dialog box when it encounters an error condition. If unchecked, errors are not reported to the user in a dialog box. However they can still be checked via `PDF_Error()` and `PDF_Status()`.

Show Progress Bar: If checked, PDF Xtra displays a progress bar when downloading PDF documents from the web.



Basic concepts

Read this section to gain a fundamental understanding of what PDF Xtra does and how best to use PDF Xtra depending on your project requirements.

Specifying pathnames

Pathnames are required for the **Link File** field in the PDF Xtra Member Options dialog box (or the Property Inspector box), and for the **PDF_Open()** method.

The path delimiters can be operating system-specific, i.e., "\" (backslash) for Windows, ":" (colon) for Mac OS. In addition, "/" (forward slash) is accepted as a universal path delimiter.

Using relative pathnames in the Link File field

Use a relative pathname if the PDF document is in the same folder hierarchy as the projector or movie. This is usually the desired path type when delivering your project on CD.

Select **Relative to Movie** for the **Path Type** in the PDF Xtra Member Options dialog box, or specify #RelativeToMovie for the #PathType option in the PDF_Open() method. The pathname is specified the same way.

Examples:

MyDoc.pdf -- Mac OS and Windows

PDF document is in a sub-directory:

MySubFolder/MyDoc.pdf -- Mac OS and Windows

MySubFolder\MyDoc.pdf -- Windows only

MySubFolder:MyDoc.pdf -- Mac OS only

PDF document in sibling directory:

../MySubFolder/MyDoc.pdf -- Mac OS and Windows

..\MySubFolder\MyDoc.pdf -- Windows only

::MySubFolder:MyDoc.pdf -- Mac OS only

Using absolute pathnames in the Link File field

Using absolute pathnames implies that you know exactly where the files will reside and that this location will not change for each end-user. You can also use the absolute pathname with the <CD-ROM> tag to specify the partial path where the documents are located on a CD-ROM and PDF Xtra will attempt to locate the files in this partial path on all CD-ROM drives available.



Examples:

- a) D:\Projects\Docs\MyDoc.pdf -- Windows and Mac
- b) http://www.PDFXtra.com/manual.pdf -- Windows and Mac
- c) D:\Projects\Docs\MyDoc.pdf -- Windows only
- d) Projects: Docs: MyDoc.pdf -- Mac only
- e) <CD-ROM>/Docs/MyDoc.pdf -- Windows and Mac

Launching Acrobat or Adobe Reader

When a PDF Xtra sprite appears on the stage or when the PDF_Open() method is called to open a PDF document, PDF Xtra uses a default launching scheme to launch the appropriate application to view the PDF, unless the application is already open.

If you want to override PDF Xtra's default launch scheme, you can explicitly launch a version of Adobe Acrobat or Reader by calling the PDF_LaunchAdobeApp() method *before* any PDF document appears in the score.

The following sections describe the different default launch schemes for Windows, Mac OS 9 and Mac OS X, as well as the use of PDF_LaunchAdobeApp() to explicitly launch an application.

Windows default launch scheme

- PDF Xtra first attempts to launch the Adobe Reader Active-X component from the user's hard drive. This Active-X component is present if any version of Acrobat or Reader has been correctly installed – it is what runs when a PDF document is opened in a web browser.
- If there is more than one version of Adobe Reader installed, PDF Xtra chooses the one that was installed most recently.
- If no version of Acrobat or Reader exists on the user's machine, PDF Xtra looks for a version of Reader on the CD, in a folder named Reader, at the root level of the CD.
- On Windows, the Adobe application is launched silently in the background, so that the PDF document appears within Director's stage.

Mac OS X default launch scheme

- PDF Xtra attempts to launch the highest version of Adobe Reader installed on the user's hard drive, and opens the PDF in an external window.
- If there is no version of Reader installed, PDF Xtra launches the Mac OS X Previewer application and opens the PDF.
- On Mac OS X, once the application is opened (Adobe Reader or Previewer) it is not controlled by PDF Xtra. The user has to manually close it.



Mac OS 9 launch scheme

- PDF Xtra attempts to launch the highest version of Adobe Reader available from the user's hard drive.
- If no version of Acrobat or Reader exists on the user's machine PDF Xtra looks for it on the CD, in a folder named Reader, at the root level of the CD.
- On Mac OS 9 the application is launched silently in the background, so that the PDF document appears within Director's stage.

Explicitly Launching Adobe Acrobat or Reader

You can call the Lingo method `PDF_LaunchAdobeApp()`, or use the **PDF_LaunchAdobeApp** behavior, to start up a version of Adobe Reader or Acrobat, at any point in your movie. This way the desired application is already open and ready to display PDF documents.

This also enables your application to launch a specific version of Adobe Reader you distribute on CD-ROM, even if another version is already installed on the client's machine.

This method should be called before displaying the first PDF Xtra sprite, for instance, in the `prepareMovie` script (or `prepareFrame` if the frame is loaded before any PDF documents are displayed). See [PDF_LaunchAdobeApp](#) in [Appendix 2: Methods Reference](#), for the syntax and examples.

The **PDF_CloseAdobeApp()** method must be called to close the application launched by `PDF_LaunchAdobeApp`. `PDF_CloseAdobeApp` must be used only if `PDF_LaunchAdobeApp` was called previously.

`PDF_CloseAdobeApp` always returns zero. See [PDF_CloseAdobeApp](#) in [Appendix 2: Methods Reference](#), for the syntax.

The PDF Xtra Behaviors Library contains two behaviors, `PDF_LaunchAdobeApp` and `PDF_CloseAdobeApp`, which launch and close Acrobat or Reader, respectively by implementing the corresponding PDF Xtra methods, described above.

See the Behaviors reference section for details on how to use these behaviors.



Scenarios for delivering your project

When your project runs on an end-user's computer, a number of separate files are required – the projector, the PDF document(s) to display, and some version of Acrobat or Adobe Reader. There are a few different scenarios for structuring the delivery of these files. For each delivery scenario, there are recommended best practices for:

- how your application should launch Adobe Reader, and
- how to specify the Link File name and File Path type used to open a PDF document

Note: For Windows, when creating a CD-ROM that contains Adobe Reader, Adobe recommends that you copy the entire folder named "Installer" located on the Acrobat 5.0 CD into the same folder as your projector/movie.

If you are authoring on a Mac, there is no "Installer" folder for Adobe Reader. To distribute Adobe Reader, you must first install it on your hard drive and then copy the installed files to the CD for distribution.

What are the possible scenarios?

- 1 All files (Adobe Reader, the Director projector and the PDF documents) are run directly from the CD-ROM
- 2 The projector is installed on the user's hard drive, and Adobe Reader is run from the CD-ROM
- 3 Acrobat or Reader is installed on the user's hard drive (the location of the projector does not matter).
- 4 The projector is installed on the user's hard drive, Acrobat/Reader is on the user's hard drive, but the PDF documents reside on a http: Server or LAN.

Before deciding on a distribution scheme, make sure to read the Adobe Reader Distribution Agreement, available on the Adobe web site:

<http://www.adobe.com/products/acrobat/distribute.html?readstep>



Recommended strategies for each scenario

1) All documents running from CD-ROM

- Projector on CD-ROM
- Adobe Reader on CD-ROM
- PDF documents on CD-ROM

To launch Reader from the CD:

Use the PDF_LaunchAdobeApp Lingo method or corresponding behavior. Make sure the Reader application is placed on the CD either in a folder named "Reader" at the root level of the CD, or by specifying a relative path, using the #path property.

Notes: If your application needs to run on Mac and Windows, you cannot specify the exact name of the Reader file – just its relative folder path.

If your application is distributed on Mac OS X, the option to launch a specific version of Reader from the CD is not supported. Instead, the default application for opening PDF document on the user's system is used.

To Link to the PDF documents:

Specify relative **Link File** names for your PDF documents in the PDF Xtra Member Options dialog box, and select **Relative to Movie** for the **File Path**.

If you use the PDF_Open method, specify a relative path:

```
PDF_Open(sprite 15, "PDFDocs/MyDoc.pdf", [#pathType: #RelativeToMovie])
```

2) Projector running from hard disk

- Projector on hard disk
- Adobe Reader on CD-ROM
- PDF documents on CD-ROM

To launch Reader from the CD:

Use the PDF_LaunchAdobeApp Lingo method or corresponding behavior. Make sure the Reader application is placed on the CD either in a folder named "Reader" at the root level of the CD, or by specifying a relative path, using the #path property.

Notes: If your application needs to run on Mac and Windows, you cannot specify the exact name of the Reader file – just its relative folder path.



If your application is distributed on Mac OS X, the option to launch a specific version of Reader from the CD is not supported. Instead, the default application for opening PDF document on the user's system is used.

To Link to the PDF documents:

In the PDF Xtra Member Options dialog box, specify the parameters as follows:

File Path: URL or Absolute

Link file: <CD-ROM>/MyProject/Data/MyDoc.pdf

If you use the PDF_Open() method, use the, <CD-ROM> tag:

```
PDF_Open(sprite 15, "<CD-ROM>/MyProject/Data/MyDoc.pdf", [#pathType:
#URLorAbsolute])
```

3) Projector and Acrobat/Reader on hard disk

- Projector on hard disk
- Acrobat or Reader on hard disk
- PDF documents on CD-ROM

To Launch Acrobat or Reader:

In this case, if you want to explicitly launch Adobe Reader you can use PDF_LaunchAdobeApp([#launchScheme: #default]), or you can just let PDF Xtra initiate its default launch scheme when the first PDF document appears on the stage.

To Link to the PDF documents:

In the PDF Xtra Member Options dialog box, specify the parameters as follows:

File Path: URL or Absolute

Link file: <CD-ROM>/MyProject/Data/MyDoc.pdf

If you use the PDF_Open() method, use the, <CD-ROM> tag:

```
PDF_Open(sprite 15, "<CD-ROM>/MyProject/Data/MyDoc.pdf", [#pathType:
#URLorAbsolute])
```

4) Projector on hard disk, PDF documents on LAN or server, using installed Acrobat/Reader.

- Projector on hard disk
- Acrobat or Reader on hard disk
- PDF documents on LAN or http server

To Launch Acrobat or Reader:

As in scenario 3, if you want to explicitly launch Adobe Reader you can use PDF_LaunchAdobeApp([#launchScheme: #default]), or you can just let



PDF Xtra initiate its default launch scheme when the first PDF document appears on the stage.

To Link to the PDF documents:

Select URL or Absolute for the **File Path** in the Member Options dialog box. Enter the full path of the PDF documents in the **Link File** field.

If you use the PDF_Open() method, include the file path option, #URLorAbsolute:

```
PDF_Open(sprite 15, the moviePath & "https://MySite/MyDocs/MyPDFDoc.pdf",  
[#pathType: #URLorAbsolute])
```



Using behaviors to control PDF sprites

Using the PDF Xtra behaviors, you can accomplish the most common tasks without having to know Lingo. The PDF Xtra behaviors library is now packaged with the Xtra for your convenience.

You can also download the most recent version of the PDF Xtra behaviors from the Free Tools section of our web site:

<http://www.INM.com/products/pdfdirector/tools/>.

The new Behaviors Library Reference Manual describes how to use the behaviors and provides detailed information on each one. Access this reference online, or download it from:

<http://www.INM.com/support/pdfdirector/manuals>

For hands-on experience with PDF Xtra behaviors, explore the **Mad Scientist's Lab (with behaviors)**, a sample Director movie that uses nearly all the behaviors. This sample is also available from the Free Tools page of our web site.



Using Lingo to control a PDF sprite

Most of Directors' standard sprite properties can be set for PDF Xtra sprites, with a few exceptions (see Limitations of PDF Xtra).

PDF sprites are also controlled using **methods** in Lingo. The general syntax for calling a PDF Xtra method is:

```
MethodName(which sprite, parameters...)
```

Example:

```
PDF_GoToPage(sprite 3, 18) -- go to page 18
```

A few PDF Xtra methods also return values and thus must be assigned to variables (or to fields, or output to the message window).

Example:

```
-- assign number of pages to n  
set n = PDF_GetNumberOfPages(sprite 3)
```

Changes you make to PDF document properties via Behaviors or the Lingo scripting interfaces are saved when you save your movie. They override the options set manually in the PDF Xtra Member Options dialog box.

Note: All methods are NOT supported consistently on Mac OS and Windows, and on Acrobat/Reader. For details, see Appendix 2: Methods reference.

If you check (turn on) the cast member option *Show Alert on Error*, PDF Xtra will display an error message at runtime when you attempt to use a command that is not supported on the current platform.



Errors and defensive programming

It is always a good practice to check for errors after calling PDF Xtra methods. If the **Alert on Error** box is checked in the PDF Xtra Member Options dialog, error messages will be displayed automatically to the user when errors occur. You can also check the value of `PDF_Status()`, which returns a non-zero error code if an error occurs, and `PDF_Error()`, which returns a plain English description of the error.

Usually, you call `PDF_Status()` to get an error or warning code, and then `PDF_Error()` to get a full explanation of that error or warning. Alternatively, your application can choose to handle specific error codes uniquely.

For examples of how to use these methods read the knowledgebase called How to handle errors in PDF Xtra at:

<http://support.inm.com/>



Delivering to the end-user

Whichever delivery method you choose for your project, a properly installed Adobe Acrobat or Reader is required either on the end-user's hard disk, or on a CD-ROM for PDF Xtra to play properly. To ensure that the version of Adobe Reader used is the version for which your application has been designed, the best practice is to distribute the Reader on CD-ROM with your project. See *Launching Acrobat or Adobe Reader in Scenarios* for delivering your project for a discussion on how to distribute your files.

If you elect not to distribute Adobe Reader with your project, you may check to see if your end-user has Acrobat or Reader installed locally and verify the version installed.

Before distributing your PDF project, you should test it on all relevant platforms to determine if there are any inconsistencies.

Playback from a projector

PDF Xtra, the file named **PDF Asset.x32** on Windows, or **PDF Asset PPC** on Mac, must be delivered in a folder named Xtras, located in the same folder as your projector. This method of delivery is recommended, rather than including the Xtra inside your projector.

Playback from Shockwave

PDF Xtra is "Shockwave-safe", meaning it can be used in Shockwave movies whether played locally or through the web.

PDF Xtra within Shockwave is supported on Windows only.

When the Shockwave movie is launched, PDF Xtra needs to be downloaded to the Adobe Shockwave Player folder, on the user's hard drive.

For Shockwave Player 10, this folder path is something like:

C:\Documents and Settings*<your user name>*\Application
Data\Macromedia\Shockwave
Player\xtras\download\IntegrationNewMediaInc

For previous versions of Shockwave Player, the path is:

Win 98/Me: Windows > System > Macromed > Shockwave > Xtras

Win NT4/2000/XP: WinNT> System32 > Macromed > Shockwave > Xtras



Auto-installation

When an end-user opens your Shockwave movie, if PDF Xtra is not already present in the Shockwave Player folder, a **Verisign** certificate is displayed, with the credentials of Integration New Media and PDF Xtra. Verisign is a standard means of downloading software from secure sources. Users have the choice of allowing or refusing the installation.

In order to tell Director where to get the correct version of PDF Xtra, you need to follow this procedure BEFORE publishing your Shockwave movie:

- 1 Using any text editor, open the file named "Xtrainfo.txt", located in the folder named Director MX 2004>Configuration (this file is located in the same folder as Director for previous versions of Director).
- 2 Add the following lines:

```
; PDF Xtra by Integration New Media, Inc.  
; http://www.INM.com/  
; http://www.PDFXtra.com/"  
[#nameW32: "pdf asset.x32", #package: "  
#package: "http://signed.INM.com/verisign/pdfdirector/verisign/8.0/pdfasset",  
#info: "http://www.INM.com/products/pdfdirector"]
```

To get the correct auto-download text for your version of the Xtra, copy it from the Xtra's Release Notes and paste it into your "Xtrainfo.txt" file. Everything in square brackets must be on a single line without line breaks.

The Release Notes are distributed with the Xtra. They can also be found on our website at: <http://www.INM/support/pdfdirector/release-history/>.

- 3 Relaunch Director and open your movie.
- 4 Choose **Modify > Movie > Xtras**.
- 5 If PDF Asset is not in the list, click **Add**. Choose PDF Asset.X32 (Win) and click **OK**.
- 6 Click PDF Asset.X32 (Win) in the Xtras list.
- 7 Check the **Download if Needed** checkbox.
At this point, Director will try to validate PDF Xtra's URL, based on the path in the XtraInfo.txt file, and will report any errors.

Users who access Shockwave movies that automatically download PDF Xtra get a Verisign certificate with the Xtra's credentials. Verisign is a standard means of downloading software from secure sources. Users have the choice of allowing or refusing the installation.



Advanced users

This section gives you an “under the hood” insight into how PDF Xtra interacts with Adobe Acrobat and Reader applications on all three supported platforms.

Windows

Acrobat and Adobe Reader install DLL, ActiveX, and COM components that are automatically entered into the Windows registry: These are essential for PDF Xtra to run properly. When PDF Xtra opens a document, either the Acrobat or Reader ActiveX component runs in the background. See [Windows default launch scheme](#).

Macintosh Classic (OS 9)

Upon installation of Acrobat or Adobe Reader, a collection of complementary files is installed. Two of these are essential to PDF Xtra: A Netscape Plug-in called PDFviewer and an Acrobat Plug-in called EWH. Unlike in Windows, either Acrobat or Adobe Reader must be open as a background application to serve PDF Xtra. If Acrobat or Adobe Reader is not open, PDF Xtra will automatically find it and open it when needed. See [Mac OS 9 launch scheme](#).

Mac OS X

On Mac OS X, there is no Netscape Plug-in for Adobe Reader. Therefore PDF Xtra opens the actual Acrobat/Reader application, or the Mac OS X Previewer in a separate window on top of Director. PDF Xtra cannot control the Adobe application, except to launch it and open a specific document. The PDF Xtra Behaviors and Lingo methods have no effect on the PDF document in Mac OS X. See [Mac OS X default launch scheme](#).



Working with PDF forms

PDF forms are becoming more and more popular. With PDF Xtra you can publish PDF forms that can be filled by the user and then printed. However, due to limitations in Adobe Reader you cannot save the filled PDF, nor can you save the data to an external file, such as an FDF file, so that it is accessible from Director. In addition, the PDF form fields cannot be automatically filled from Director.

If you need this kind of functionality in your project INM has another product, **INM Impressario**, which offers much more powerful interaction between PDF documents and Director, including the ability to save PDF forms filled by the user, and the ability to Set and Get PDF form data directly from Director.

INM Impressario uses the underlying Adobe PDF Libraries, but does not require end-users to have the Acrobat or Reader applications installed on their computers.

For more information on INM Impressario, visit:

<http://www.Impressario.com>



Tips and tricks

This section contains a few of the most commonly used techniques for working with PDF Xtra, such as:

- [Detecting end-user's configuration at runtime](#)
- [Faking transparency](#)
- [Avoiding flicker when document opens](#)
- [Avoiding Acrobat/Reader conflict](#)
- [Preventing Acrobat/Reader splash screen from appearing](#)
- [Managing a large number of PDF documents](#)
- [Indexing and searching PDF documents](#)

Detecting end-user's configuration at runtime

You can check whether Acrobat and/or Reader are installed on the end-user's computer and make appropriate decisions before displaying frames that contain PDF sprites.

Here are a few examples of what you can do:

Check via Lingo for Adobe Reader:

```
on isAdobeReaderPresent
  x = PDF_AcrobatInfo()
  repeat with i = 1 to count(x)
    app = GetProp(GetAt(x, i), #appname)
    if (app = "Reader") then
      appver = GetProp(GetAt(x, i), #version)
      ver = char (1) of appver
      if (ver = "5") OR (ver = "6") OR (ver = "7") OR (ver = "8") then
        return TRUE
      end if
    end if
  end repeat
  return FALSE
end isAdobeReaderPresent
```

Check via Lingo for the full version of Acrobat (needed for the GetText command):

```
on isAcrobatPresent
  x = PDF_AcrobatInfo()
  repeat with i = 1 to count(x)
    app = GetProp(GetAt(x, i), #appname)
    if (app = "Acrobat") then
      appver = GetProp(GetAt(x, i), #version)
      ver = char (1) of appver
    end if
  end repeat
  return ver > "4"
end isAcrobatPresent
```



```

        if (ver = "5") OR (ver = "6") OR (ver = "7") OR (ver = "8") then
            return TRUE
        end if
    end if
end repeat
return FALSE
end isAcrobatPresent

```

When you want to call the above handler, put the following into your movie in an appropriate spot, such as the StartMovie handler:

```

on StartMovie
    if isAcrobatPresent() = false then
        alert "You need to install Acrobat 5.0 or higher before you can run this program."
        quit
    end if
end StartMovie

```

Faking transparency

PDF Xtra does not support transparent PDF documents. However, you can make your PDF sprite *look* as if it's transparent by making sure there is a solid colored background underneath the sprite that matches the background color of your PDF document. To do this, you must create a colored background for your document *before* publishing it in PDF format.

Avoiding flicker when document opens

In order to avoid a quick refresh flicker when your PDF sprite first loads, you should save the PDF document in Acrobat with the display settings that match those listed in the PDF Xtra Member Options (Custom Display Options).

To change the PDF display settings from Acrobat 6,7 or 8:

Select **File > Document Properties...** Choose **Initial View** from the left panel and select the desired Document and Interface Options to match the settings of your sprite.

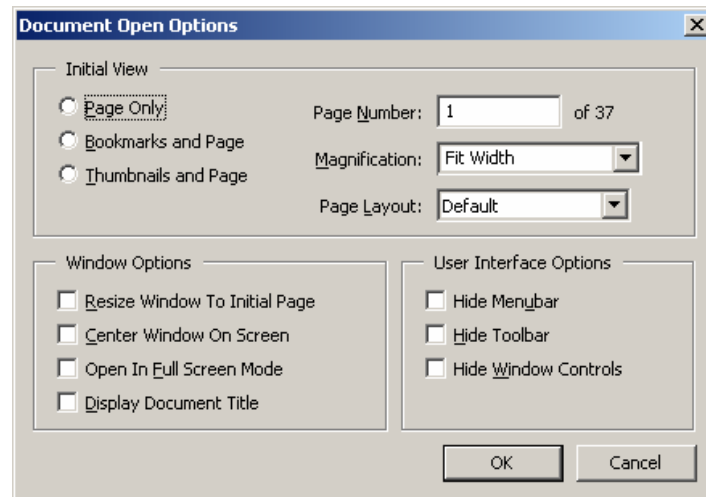
Acrobat also has a Batch Process feature, which allows you to change the settings of multiple documents in one pass. In Acrobat 4.0, click **File > Batch Process...** and select **Open Info...** to choose the settings for a group of documents. In Acrobat 5.0, click **File > Batch Processing**. In Acrobat 6.0 click **Advanced > Batch Processing...** From the next level menu you can select one of the predefined Batch processes to run, or define your own by clicking Edit Batch Sequences...



In the PDF Xtra Member Options dialog (or in the PDF_Open() method), you can set the Display Option to Document Display Options. When set to that option, PDF Xtra will directly use the document's last-saved display settings.

To change the PDF document settings from Acrobat 5:

Select **File > Document Properties > Open Options...** and change the settings to match the settings of your sprite.



Acrobat 5 – Document Open Options

Avoiding Acrobat/Reader conflict

If you are trying to force PDF Xtra to Adobe Acrobat, by calling PDF_LaunchAdobeApp(#Acrobat), but the Reader is already open, PDF Xtra will return an error: -55 on Mac and -1070 on Windows (see [Appendix 4: Error Codes](#)). To avoid this problem, close any open Adobe Acrobat/Reader application, by calling PDF_CloseAdobeApp(), before calling PDF_LaunchAdobeApp().

Preventing Acrobat/Reader splash screen

It is possible to prevent the Adobe splash screen from appearing when Acrobat loads, please consult the Knowledgebase section of our web site for more information on how to achieve this:

<http://support.INM.com/>



Managing a large number of PDF documents

When your project uses many PDF documents, with similar dimensions and positioning on the screen, you can use a single PDF cast member and switch the PDF document it contains by calling the [PDF_Open\(\)](#) method using different filename parameters.

For an example of how this technique is used, download the Merck Veterinary Manual Demo at: <http://www.PDFExtra.com/demos/>

Indexing and searching PDF documents

INM PDF Xtra allows you to use the Adobe Search panel to search within the PDF document currently displayed.

If your project requires the ability to search across multiple PDF documents, we recommend using the [Searchable Library Toolkit](#), which combines the strengths of [INM Impressario](#) and [INM VizionDB](#). This solution indexes the contents of a collection of PDF documents so that they can be quickly searched by end-users in your application.

The Searchable Library Toolkit comes with

- A step-by-step wizard for creating the Searchable Library database,
- A Flash-based search panel similar to the one found in Adobe Reader
- Behaviors, for implementing a search interface without having to code in Lingo.
- Lingo functions, to create your own search interface.
- An instruction manual
- And sample movies to get you started and give you ideas.

Requirements to distribute a Searchable Library solution

A Searchable Library project can be delivered on both Mac and Windows. This solution requires licenses for both **INM Impressario** and **INM VizionDB**, which can be purchased together at a discounted special bundle on our web site, called [The Essential Pack](#).

INM Development Services

If you need assistance to adapt the Searchable Library to your own projects, please contact INM Consulting Services at: services@INM.com,

Tel: + 1 514 871 1333 Option 5

or + 1 800 400 1772 (toll free, USA and Canada)



Appendix 1: Lingo compatibility chart

Due to the way that Adobe Acrobat functionality is implemented on Macintosh and Windows, some functions are only available on one platform or the other. On Mac OS X, none of the Lingo methods are available except [PDF_Open\(\)](#) and [PDF_AcrobatInfo\(\)](#).

Also, because PDF Xtra is compatible with both the commercial version of Acrobat and the free version of Adobe Reader, it contains some features that are available only with the full version of Acrobat.

If you are shipping your product with Adobe Reader only, make sure you do not use functions, which require Acrobat. The chart on the next page lists the Lingo methods and which platforms and Acrobat versions they are compatible with.



PDF sprite methods

M = Supported on Mac OS 9, W = Supported on Windows
(on Mac OS X, only PDF_Open and PDF_AcrobatInfo are supported)

Adobe Acrobat		Adobe Reader		Methods
5	6 – 8	5	6 - 8	
M W	W	M W	W	PDF_Close
M W	W	M W	W	PDF_Error
M W	W	M W	W	PDF_GetDocumentInfo
W	W	W	W	PDF_GoFirstPage
M W	W	M W	W	PDF_GetNumberOfPages
W	W	-	-	PDF_GetPageNumber
W	W	-	-	PDF_GetText
W	W	W	W	PDF_GoLastPage
W	W	W	W	PDF_GoPreviousPage
W	W	W	W	PDF_GoNextPage
W	W	W	W	PDF_GotoPage
M W	M W	M W	M W	PDF_Open
-	-	W	W	PDF_Open (password protected)
M W	W	-	-	PDF_Print (without dialog)
M W	W	M W	W	PDF_Print (with dialog)
W	W	-	-	PDF_Save
W	W	W	W	PDF_SetDisplayMode
W	W	W	W	PDF_ScrollTo
M W	W	M W	W	PDF_Status
W	W	W	W	PDF_ZoomTo

PDF Xtra global methods

Acrobat			Adobe Reader			Method
5	6	7 - 8	5	6	7 - 8	
M W	W	W	M W	M W	W	PDF_AcrobatInfo
M W	W	W	M W	M W	W	PDF_CloseAdobeApp
M W	M W	M W	M W	M W	M W	PDF_Help
M W	W	W	M W	M W	W	PDF_LaunchAdobeApp
M W	M W	M W	M W	M W	M W	PDF_Version



Appendix 2: Methods reference

Sprite methods vs. global methods

PDF Xtra supports two types of methods: *sprite methods* and *global methods*.

Sprite methods are those that affect a particular sprite and have that sprite's reference as a first parameter.

Example (using long syntax):

```
PDF_GoToPage(sprite 3, 8) -- go to page 8
```

Example (using "dot" syntax):

```
sprite (3).PDF_GoToPage(8) -- go to page 8
```

Director must be in Play mode for the Sprite Methods to properly execute.

Global methods are those available at all times, even if no PDF sprite is present of the stage. They can be considered as a direct extension of your Lingo library.

Example:

```
set v = PDF_Version()
```

Syntax of examples

Most of the examples shown in this section use the "dot syntax" (where the object name is specified, followed by a ".", followed by the method name and its parameters, in parentheses).

Example of with dot syntax:

```
sprite(3).MethodName(parameter...)
```



PDF sprite methods

PDF_Close

Syntax	<code>PDF_Close(<i>whichSprite</i>)</code>
Parameters	<i>whichSprite</i> : a sprite of type PDF
Description	Closes the PDF document currently shown in sprite <i>whichSprite</i>
Example	<code>sprite (15).PDF_Close() -- using dot syntax</code>
Platforms	All except Mac OS X
See also	PDF_Open

PDF_Error

Syntax	<code>PDF_Error(<i>whichSprite</i>)</code>
Parameters	<i>whichSprite</i> : a sprite of type PDF
Description	Returns a string describing the last error that occurred (in plain English), or EMPTY if no error occurred in sprite <i>whichSprite</i> .
Examples	<pre>-- display the error text if there's an error if (sprite 15).PDF_Status() <> 0) then alert (sprite 15).PDF_Error() end if</pre>
Platforms	All except Mac OS X
See also	PDF_Status

PDF_FindText

Syntax	<code>PDF_FindText(<i>whichSprite</i>, <i>whichText</i>, <i>matchCase</i>, <i>wholeWord</i>, <i>reset</i>)</code>
Parameters	<i>whichSprite</i> : a sprite of type PDF <i>whichText</i> : string to find in the PDF document <i>matchCase</i> : TRUE/FALSE — case-sensitive search. <i>wholeWord</i> : TRUE/FALSE — match whole word. <i>reset</i> : Windows — TRUE if you wish to <i>Find First Occurrence</i> . FALSE if you wish to <i>Find Next Occurrence</i> . Mac OS — TRUE if you wish to do a <i>Wrap Search</i> . FALSE if you wish to <i>Stop at end of document</i> .
Description	Instructs Acrobat to find and highlight <i>whichText</i> in the current PDF document. The <i>reset</i> parameter allows you to



specify whether or not to search from the beginning of the document. *Reset's* interpretation is slightly different on Mac OS and Windows.

Note: The *reset* parameter is interpreted differently on Mac OS and Windows.

Examples `-- locate the search text`
`sprite (15).PDF_FindText(member("SearchTerm").text, FALSE,`
`FALSE, TRUE)`

Platforms Full version of Acrobat on Windows

See also [PDF_GetText](#)

PDF_GetDocumentInfo

Syntax `PDF_GetDocumentInfo(whichSprite)`

Parameters *whichSprite*: a sprite of type PDF

Description Return a property list of all the document information (if any). The property list could contain the document title, author, keywords, creation date, modification date, ...

Note: PDF_GetDocumentInfo will return encrypted information if the document is password protected.

Examples `-- get the document info`
`lDocInfo = sprite(15).PDF_GetDocumentInfo()`

Platforms All except Mac OS X

See also [PDF_GetNumberOfPages](#)

PDF_GetNumberOfPages

Syntax `PDF_GetNumberOfPages(whichSprite)`

Parameters *whichSprite*: a sprite of type PDF

Description Return the number of pages in the PDF document displayed in the sprite *whichSprite*

Examples `-- put the total number of pages into a global variable`
`gTotalPages = sprite(15).PDF_GetNumberOfPages()`

Platforms All except Mac OS X

See also [PDF_GetPageNumber](#)



PDF_GetPageNumber

Syntax	PDF_GetPageNumber(<i>whichSprite</i>)
Parameters	<i>whichSprite</i> : a sprite of type PDF
Description	Return the page currently displayed in the PDF sprite <i>whichSprite</i>
Examples	-- get the current page number CurrentPage = <i>sprite</i> (15).PDF_GetPageNumber()
Platforms	Acrobat: Mac Classic & Win
See also	PDF_GetNumberOfPages

PDF_GoFirstPage

Syntax	PDF_GoFirstPage(<i>whichSprite</i>)
Parameters	<i>whichSprite</i> : a sprite of type PDF
Description	Display the first page of the document in the PDF sprite <i>whichSprite</i>
Examples	-- go to first page <i>sprite</i> (15).PDF_GoFirstPage()
Platforms	Reader: Win Only, Acrobat: Mac Classic & Win
See also	PDF_GetPageNumber , PDF_GoLastPage , PDF_GoNextPage , PDF_GoLastPage , PDF_GotoPage

PDF_GetText

Syntax	PDF_GetText(<i>whichSprite</i>)
Parameters	<i>whichSprite</i> : a sprite of type PDF
Description	Return the text of the current page of the PDF sprite. The word order is not guaranteed to be in the order of appearance in the document, due to the fact that a PDF document can contain many layers. The order of the text depends on the structure of the PDF document.

Note: The PDF_GetText method may not always function, depending on the way the PDF has been distilled. If you experience problems with this method, please consult our Technical Support department.

Examples	-- put the text of the current page into a field (<i>member</i> "myPage").text = <i>sprite</i> (15).PDF_GetText()
Platforms	Acrobat: Win Only
See also	PDF_FindText



PDF_GoLastPage

Syntax	PDF_GoLastPage(<i>whichSprite</i>)
Parameters	<i>whichSprite</i> : a sprite of type PDF
Description	Display the last page of the document in the PDF sprite <i>whichSprite</i>
Examples	<pre>-- go to last page sprite(15).PDF_GoLastPage()</pre>
Platforms	Reader: Win Only, Acrobat: Mac Classic & Win
See also	PDF_GetPageNumber , PDF_GoFirstPage , PDF_GoNextPage , PDF_GoPreviousPage , PDF_GotoPage

PDF_GoPreviousPage

Syntax	PDF_GoPreviousPage(<i>whichSprite</i>)
Parameters	<i>whichSprite</i> : a sprite of type PDF
Description	Display the page before the one currently displayed in the PDF sprite <i>whichSprite</i>
Examples	<pre>-- go to previous page sprite(15).PDF_GoPreviousPage()</pre>
Platforms	Reader: Win Only, Acrobat: Mac Classic & Win
See also	PDF_GetPageNumber , PDF_GoFirstPage , PDF_GoLastPage , PDF_GoNextPage , PDF_GotoPage

PDF_GoNextPage

Syntax	PDF_GoNextPage(<i>whichSprite</i>)
Parameters	<i>whichSprite</i> : a sprite of type PDF
Description	Display the page following the currently displayed page <i>whichSprite</i>
Examples	<pre>-- go to next page sprite(15).PDF_GoNextPage()</pre>
Platforms	Reader: Win Only, Acrobat: Mac Classic & Win
See also	PDF_GoFirstPage , PDF_GetPageNumber , PDF_GoLastPage , PDF_GotoPage

PDF_GotoPage

Syntax	PDF_GotoPage(<i>whichSprite</i> , <i>pageNumber</i>)
Parameters	<i>whichSprite</i> : a sprite of type PDF



pageNumber: the page number to display

Description	Display page number <i>pageNumber</i> in the PDF sprite <i>whichSprite</i>
Examples	-- go to page 3 of the PDF document <i>sprite</i> (15).PDF_GotoPage(3)
Platforms	Reader: Win Only, Acrobat: Mac Classic & Win
See also	PDF_GetPageNumber , PDF_GoFirstPage , PDF_GoLastPage , PDF_GoNextPage , PDF_GoPreviousPage

PDF_Open

Syntax	PDF_Open(<i>whichSprite</i> , <i>Path</i> [, <i>options</i>])
Parameters	<p><i>whichSprite</i>: a sprite of type PDF</p> <p><i>Path</i>: string containing the full or relative pathname of the PDF document to open</p> <p><i>options</i>: optional property list to specify document's initial properties</p>
Description	<p>Open the specified PDF document. If an options list is specified, starting values are assigned to the PDF sprite as follows. However, the PDF member properties are used as defaults.</p> <p>#pathType: Symbol. #URLOrAbsolute, #RelativeToMovie</p> <p>#password: Text. Document password (Windows / Reader only).</p> <p>#enableUpdateFromURL: Integer (boolean). TRUE/FALSE – use UpdateFromURL or not.</p> <p>#UpdateFromURL: Text. URL from which to download the updated document.</p> <p>#displayOption: Symbol. Use document or custom display option. Possible values: #documentdisplayoptions, #customdisplayoptions. If #documentdisplayoptions is used, all the settings that follow are ignored. Note that the symbol values, #customdisplayoptions and #documentdisplayoptions, must be in lowercase.</p> <p>#page: Integer. Page at which the document opens. (this option does NOT work with Acrobat full version, on Windows)</p> <p>#zoom: Symbol or Integer. Scaling factor at which the document opens. This is an integer in the range 8 to 1600, or one of #actualSize, #fitInWindow, #fitWidth, #fitHeight or #fitVisible</p> <p>#displayMode: Symbol. #pagesOnly, #bookmarkAndPages, #thumbnailAndPages</p>



#toolbar: Integer (boolean). TRUE/FALSE — Show Toolbar
 #scrollbars: Integer (boolean). TRUE/FALSE — Show Scrollbars
 #scrollH: Integer. Number of horizontal pixels to scroll document
 #scrollV: Integer. Number of vertical pixels to scroll document

Note: If not all options are listed in the Options list (third parameter), the missing ones are inherited from the PDF Member's Options dialog box. Thus, if the #pathType is not specified to PDF_Open(), the PDF Xtra Member Options dialog's path type is used. In that case, you must make sure to provide PDF_Open() with a pathname that agrees with the path type chosen in the dialog box (if one is relative, the other must be relative too).

Examples

```
-- open document from absolute path, using the moviopath
PDF_Open(sprite 15, the moviopath & "MyDocs/MyDoc.pdf",
[#pathType: #URLOrAbsolute])

-- open document from absolute path, using applicationPath
PDF_Open(sprite 15, the applicationPath &
".../MyDocs/MyOtherDoc.pdf", [#pathType: #URLOrAbsolute])

-- open document using the full path
PDF_Open(sprite 15, "D/MyProject/Data/MyDoc.pdf", [#pathType:
#URLOrAbsolute])

-- open document using a URL
PDF_Open(sprite 15, "http://www.PDFXtra.com/MyDoc.pdf",
[#pathType: #URLOrAbsolute])

-- open document using a relative path; display bookmarks
PDF_Open(sprite 15, "MyDoc.pdf",
[#displayMode: bookmarkAndPages, #pathType: #RelativeToMovie])

-- open document using a relative path;
-- with various custom display options set (Reader)
PDF_Open(sprite 15, "MyDocs/MyDoc.pdf", [#displayoption:
#customdisplayoptions, #page: 4, #zoom: #fitWidth, #pathType:
#RelativeToMovie])

-- assumes the path type is set to relative in the sprite
-- properties; uses the custom display options in effect
PDF_Open(sprite 15, "MyDocs/MyDoc.pdf", [#displayoption:
#customdisplayoptions])
```

Platforms All except Mac OS X. (on Mac OS X the document displays in a separate window, with its default settings)

See also [PDF_Close](#), [PDF_ScrollTo](#), [PDF_ZoomTo](#)



PDF_Print

Syntax	<code>PDF_Print(<i>whichSprite</i> [, <i>FirstPage</i>, <i>LastPage</i>])</code>
Parameters	<p><i>whichSprite</i>: a sprite of type PDF</p> <p><i>FirstPage</i>: Integer. Optional parameter. The first page of the document to be printed.</p> <p><i>LastPage</i>: Integer. Optional parameter. The last page of the document to be printed.</p>
Description	<p>With PDF Xtra's default application launch scheme, <code>PDF_Print()</code> opens the Acrobat print dialog so that the user can select options to print the PDF currently open in sprite <i>whichSprite</i>.</p> <p>The optional parameters <i>FirstPage</i> and <i>LastPage</i> are to be used with when the full version of Acrobat is launched, via <code>PDF_LaunchAdobeApp(#Acrobat)</code>, because in this case the print options dialog cannot be displayed.</p>

Note: This method has changed since version 3 of PDF Xtra. If you are using PDF Xtra 7 or 8, please change your scripts to match the new syntax.

Examples	<pre>-- open the Adobe print dialog box sprite(15).PDF_Print()</pre>
Platforms	All except Mac OS X

PDF_Save

Syntax	<code>PDF_Save(<i>whichSprite</i>, <i>absolutePath</i>)</code>
Parameters	<p><i>whichSprite</i>: a sprite of type PDF</p> <p><i>absolutePath</i>: string containing the path and file name to save to.</p>
Description	<p>Saves the document displayed in <i>whichSprite</i> to the specified file.</p> <p><i>absolutePath</i> is necessarily an absolute pathname. Use the <code>moviePath</code> or the <code>applicationPath</code> to build path names that depend on the exact position of the current movie or the current playback engine. An empty value for <i>absolutePath</i> will save the document under its current name.</p>
Examples	<pre>-- save the open PDF (on Windows) sprite(15).PDF_Save(the moviePath & "PDFs\myDoc2.pdf")</pre>
Platforms	Acrobat: Win only



PDF_ScrollTo

Syntax	<code>PDF_ScrollTo(<i>whichSprite</i>, <i>theTypeSymbol</i>, <i>scale</i>, <i>x</i>, <i>y</i>)</code>
Parameters	<p><i>whichSprite</i>: a sprite of type PDF</p> <p><i>theTypeSymbol</i>: one of the following symbols: <code>#fitWindow</code>, <code>#actualSize</code>, <code>#fitWidth</code>, <code>#fitHeight</code>, <code>#fitVisible</code>, or <code>#useScale</code>.</p> <p><i>scale</i>: a value between 8 and 1600, which denotes the percentage to zoom (ignored unless used in conjunction with <code>#useScale</code>)</p> <p><i>x</i>: the horizontal position to scroll to (in pixels)</p> <p><i>y</i>: the vertical position to scroll to (in pixels)</p>
Description	<p>Moves the specified coordinate to the upper left hand corner of the sprite rectangle in a view zoomed as specified in <i>theTypeSymbol</i> and <i>scale</i>.</p> <p><i>theTypeSymbol</i> must be one of the following values:</p> <ul style="list-style-type: none">• <code>#fitWindow</code>: resize the document to the size of the current PDF sprite.• <code>#actualSize</code>: resize the document to its original size, regardless of the size of the sprite. This is equivalent to 100%.• <code>#fitWidth</code>: resize the document so that its width matches the width of the sprite.• <code>#fitHeight</code>: resize the document so that its height matches the height of the sprite.• <code>#fitVisible</code>: resize the document so that its larger dimension (height or width) matches the respective height or width of the sprite.• <code>#useScale</code>: resize the document to fit the scale value specified by the <i>scale</i> attribute.
Examples	<pre>-- scroll the PDF document down 20 pixels from the top sprite(15).PDF_ScrollTo(#fitWidth, 0, 0, 20)</pre>
Platforms	Acrobat: Win only, Reader: Win only
See also	PDF_Open , PDF_ZoomTo



PDF_SetDisplayMode

Syntax	PDF_SetDisplayMode(<i>whichSprite</i> , <i>theModeSymbol</i>)
Parameters	<i>whichSprite</i> : a sprite of type PDF <i>theModeSymbol</i> : one of the following symbols: #pagesOnly, #bookmarkAndPages, #thumbnailAndPages
Description	<p>Change the display mode of the specified sprite of type PDF according to the symbol given in <i>theModeSymbol</i>:</p> <ul style="list-style-type: none">• #pagesOnly: Displays just the contents of the document.• #bookmarkAndPages: Displays the page and the Bookmarks tab.• #thumbnailAndPages: Displays the page and the Thumbnails tab. <p>When using Acrobat for Windows, this method will only work if toolbars are shown.</p>
Examples	<pre>-- display the PDF document with thumbnails and Pages open on mouseDown me sprite(15).PDF_SetDisplayMode(#ThumbnailAndPages) end</pre>
Platforms	Windows only

PDF_Status

Syntax	PDF_Status(<i>whichSprite</i>)
Parameters	<i>whichSprite</i> : a sprite of type PDF
Description	<p>Return the error code of the last call to PDF sprite <i>whichSprite</i>, or zero if no error occurred.</p>
Examples	<pre>-- display the error text if there's an error if (sprite(15).PDF_Status() <> 0) then alert sprite(15).PDF_Error() end if</pre>
Platforms	All except Mac OS X
See also	PDF_Error



PDF_ZoomTo

Syntax	PDF_ZoomTo(<i>whichSprite</i> , <i>theTypeSymbol</i> , <i>scale</i>)
Parameters	<p><i>whichSprite</i>: a sprite of type PDF</p> <p><i>theTypeSymbol</i>: one of the following symbols: #fi ti nWi ndow, #actual Si ze, #fi tWi dth, #fi tHei ght, #fi tVi si bl e or #useScal e</p> <p><i>scale</i>: a value between 8 and 1600, which denotes the percentage to zoom (ignored unless used in conjunction with #useScal e)</p>
Description	<p>Zoom the current document as specified by <i>theTypeSymbol</i> and <i>scale</i>.</p> <ul style="list-style-type: none">• #fi ti nWi ndow: resize the document to the size of the current PDF sprite.• #actual Si ze: resize the document to its original size, regardless of the size of the sprite. This is equivalent to 100%.• #fi tWi dth: resize the document so that its width matches the width of the sprite.• #fi tHei ght: resize the document so that its height matches the height of the sprite.• #fi tVi si bl e: resize the document so that its larger dimension (height or width) matches the respective height or width of the sprite• .#useScal e: resize the document to fit the scale value specified by the scale attribute
Examples	<pre>-- zoom the open PDF to twice it's original size sprite(15).PDF_ZoomTo(#useScale, 200)</pre>
Platforms	Reader: Win only, Acrobat: Mac Classic & Win
See also	PDF_Open , PDF_ScrollTo



PDF Xtra global methods

PDF Xtra features the following global methods. To call them, simply use their names. Example:

```
gCurrentPDFXtraVersion = PDF_Version()  
-- this puts a property list containing the current version of PDF Xtra  
   into the variable gCurrentPDFXtraVersion.
```

PDF_AcrobatInfo

Syntax PDF_AcrobatInfo()

Parameters None.

Description Returns a Lingo property list describing the presence and state of Adobe Acrobat or Reader on the current computer. The returned list contains the following properties:

#appname name of Acrobat viewer. On Windows, the possible values are "Reader" and "Acrobat". On Macintosh, the actual application name is returned. By default, the version 5.0 Reader's name is "Acrobat™ Reader 5.0" and version 5.0 Acrobat's name is "Acrobat™ 5.0".

#version Acrobat viewer's version.

```
Example -- check if Acrobat or Reader 5 is present  
on isPresent  
  x = PDF_AcrobatInfo()  
  repeat with i = 1 to count(x)  
    appVers = GetProp(GetAt(x, i), #version)  
    if (appVers contains "5") then RETURN TRUE  
  end repeat  
  RETURN FALSE  
end isPresent
```

Platforms All except Mac OS X

PDF_CloseAdobeApp

Syntax PDF_CloseAdobeApp()

Parameters None.

Description Close any open Adobe application.

```
Example -- close any open Acrobat or Reader application, so you can  
         launch a specific one from CD-ROM
```

```
PDF_CloseAdobeApp()
```

Platforms Windows and Mac OS 9. Not supported on Mac OS X

See also [PDF_LaunchAdobeApp](#)



PDF_Help

Syntax	PDF_Help()
Parameters	None
Description	Display a brief list of PDF Xtra's methods and their syntax.
Examples	A typical use is to type the following into Director's message window: <code>put PDF_Help()</code>
Platforms	All

PDF_LaunchAdobeApp

Syntax	PDF_LaunchAdobeApp(Options)
Parameters	<p>Options: A property list, of the following format:</p> <p>[#launchScheme: theLaunchScheme, #path: thePath]</p> <p>theLaunchScheme can be:</p> <p>#default: PDF Xtra's default launch scheme as described in the section Launching Acrobat or Adobe Reader. The default launch scheme is different for Windows and Mac OS 9 vs. Mac OS X.</p> <p>#Acrobat: the full version of Acrobat is launched from the user's hard drive, as opposed to the Reader Active-X component. If the full version of Acrobat is not installed on the user's machine, an error is generated.</p> <p>#CDROM: The Adobe Reader application included on CD-ROM is launched. If the #path property is not included, PDF Xtra looks for the Reader application in a folder named "Reader" at the root level of the CD-ROM. If #path is specified, PDF Xtra looks for the Reader application at the path specified.</p> <p>thePath: String. This property is only used when the #launchScheme is set to #CDROM. It is the relative path on the CD-ROM where the Reader application is located.</p>
Description	Launches the specified application (Acrobat or Reader) at any point in the movie. If the #launchScheme specified is #CDROM, PDF Xtra will search on every CD-ROM drive to locate the Reader application in a folder named "Reader", or in the #Path if it is specified.
Platforms	Windows and Mac OS 9. Not supported on Mac OS X.
Examples	-- Launches Reader from the Reader folder at the root level of the CDROM



```
PDF_LaunchAdobeApp([#launchScheme: #CDROM])

-- launches Reader 6 from a specific folder named Reader 6
PDF_LaunchAdobeApp([#launchScheme: #CDROM, #path: "/Reader 6/"])

-- launches Acrobat full version specifically for the ability
  to get the text of a PDF page
PDF_LaunchAdobeApp([#launchScheme: #Acrobat])
```

See also [PDF_CloseAdobeApp](#)

PDF_SetProgressIndicator

Syntax PDF_SetProgressIndicator(*showProgress*)

Parameters *showProgress*: True/False.

Description If *showProgress* is True, progress bars are displayed for when PDF documents are auto-downloaded from the web.

If *showProgress* is False, progress indicators are not displayed.

Default: True.

Lingo example -- turn off Impressario progress indicators

```
PDF_SetProgressIndicator(FALSE)
```

Platforms Windows and Mac OS 9. Not supported on Mac OS X.

PDF_Version

Syntax PDF_Version()

Parameters None.

Description Returns the current PDF Xtra's version number. This is used only for debugging purposes.

Examples gCurrentPDFXtraVersion = PDF_Version()

Platforms All



Appendix 3: Member properties

PDF Xtra supports some member properties. These properties are exactly the same as the ones in the PDF Xtra member properties dialog box (and Property Inspector). They change the display of a PDF document only upon its initial opening.

Member properties affect all sprites of a particular member. Example:

Set the linkfile of member "MyPDFMember" to "c:\myDoc.pdf"

Note that in Director 7.x and 8.x it is possible to use the dot syntax with member properties, as in:

```
Member("MyPDFMember").linkfile = "c:\myDoc.pdf"
```

PDF member properties

Alert

Syntax	<code>member(<i>whichMember</i>).alert = T/F</code>
Description	Boolean. If you want the user to see an error dialog box when PDF Xtra encounters an error condition, set the alert property to True. Global property (affects all members). True/False.
Examples	-- turn off automatic alerts to user when errors occur <code>member("myPDFMember").Alert = FALSE</code>
Platforms	ALL
See also	Application

DisplayMode

Syntax	<code>member(<i>whichMember</i>).DisplayMode = <i>whichMode</i></code>
Description	Text.
Examples	--set the displaymode of member "myPDFMember" to fitwidth <code>member("myPDFMember").DisplayMode = #fitwidth</code>
Platforms	ALL except Mac OS X
See also	DisplayOption , Page , ScrollH , ScrollV , ScrollBars , Toolbar , Zoom

DisplayOption

Syntax	<code>member(<i>whichMember</i>).DisplayOption = <i>whichOption</i></code>
Description	Symbol. Two possible values: #documentDisplayOptions: the initial display settings saved with the PDF #customDisplayOptions: settings specified in Director



by PDFXtra properties such as zoom, page, etc.

- Examples** `member("myPDFMember").DisplayOptions = #documentDisplayOptions`
`member("myPDFMember").DisplayOptions = #customDisplayOptions`
- Platforms** ALL except Mac OS X
- See also** [DisplayMode](#), [Page](#), [ScrollIH](#), [ScrollIV](#), [ScrollBars](#), [Toolbar](#), [Zoom](#)

EnableUpdateFromURL

- Syntax** `member(whichMember).EnableUpdateFromURL = T/F`
- Description** Boolean. Indicates whether or not to update the PDF document being loaded, using the URL specified in the UpdateFromURL property. True/False.
- Examples** `member("myPDFMember").EnableUpdateFromURL = TRUE`
`-- PDF xtra will check the URL specified in the UpdateFromURL property and update if necessary.`
-
- `member("myPDFMember").EnableUpdateFromURL = FALSE`
-
- `-- PDF xtra will NOT check the URL specified in the UpdateFromURL property.`
- Platforms** ALL except Mac OS X
- See also** [LinkFile](#), [UpdateFromURL](#)

LinkFile

- Syntax** `member(whichMember).LinkFile = whichLinkFile`
- Description** Text. Links the member *whichMember* to the PDF file specified by *whichLinkFile*. The pathType property, which indicates if the LinkFile is absolute or relative, must be specified before changing the LinkFile property.
- When you change the LinkFile property of a PDF member whose sprite is already on stage, you will not see the PDF document change; you need to refresh the sprite on stage by going to a frame that doesn't contain the PDF sprite first.
- Examples** `member("myPDFMember").LinkFile = the moviepath & "MyDoc.pdf") -- the pathType must be absolute.`
-
- `member("myPDFMember").LinkFile = the moviepath & "MyDocs/MyDoc.pdf") -- the pathType must be absolute.`
-
- `member("myPDFMember").LinkFile = "PDFs/MyDoc.pdf") -- the pathType must be #RelativeToMovie.`
-
- `member("myPDFMember").LinkFile = "MyDoc.pdf") -- the pathType must be RelativeToMovie.`



Platforms ALL

See also [PathType](#), [PDF_Open](#)

Page

Syntax `member(whichMember).Page = whichPage`

Description Integer. Specify the page number of the PDF Document from which you would like it to open when displayed.

Examples `member("myPDFMember").Page = 2`

Platforms ALL except Mac OS X

See also [DisplayMode](#), [DisplayOption](#), [ScrollH](#), [ScrollV](#), [ScrollBars](#), [Toolbar](#), [Zoom](#)

Password

Syntax `member(whichMember).Password = whichPassword`

Description Text. Password of the PDF document to open (when using Adobe Reader for Windows Only).

Example `-- set the password before setting the LinkFile`
`member("myPDFMember").Password = "Secret"`
`member("myPDFMember").LinkFile = "PDFs/MyDoc.pdf"`

Platforms Windows/ Reader only.

See also [LinkFile](#)

PathType

Syntax `member(whichMember).PathType = whichPathType`

Description Symbol. Indicates what type of path the Link File is. The Link File can be absolute or relative.
Possible values: #URLorAbsolute OR #RelativeToMovie

Examples `member("myPDFMember").PathType = #URLorAbsolute -- the linkfile must be an absolute path.`
`member("myPDFMember").PathType = #RelativeToMovie -- the linkfile must be an relative path.`

Platforms ALL

See also [LinkFile](#)

ScrollBars

Syntax `member(whichMember).Scrollbars = T/F`

Description Boolean. show/hide horizontal and vertical scrollbars to scroll the document displayed by PDF Xtra. True/False.

Examples `--turn off scrollbars`
`member("myPDFMember").scrollbars = FALSE`

Platforms ALL except Mac OS X



See also [DisplayMode](#), [DisplayOption](#), [Page](#), [ScrollH](#), [ScrollV](#), [Toolbar](#), [Zoom](#)

ScrollH

Syntax `member(whichMember). ScrollH = whichScrollH`

Description Integer. Specify the number of pixels to scroll the PDF document horizontally in the sprite upon opening it.

Examples `-- scroll the document 35 pixels to the right`
`member("myPDFMember"). ScrollH = 35`

Platforms ALL except Mac OS X

See also [DisplayMode](#), [DisplayOption](#), [Page](#), [ScrollV](#), [ScrollBars](#), [Toolbar](#), [Zoom](#)

ScrollV

Syntax `member(whichMember). ScrollV = whichScrollV`

Description Integer. Specify the number of pixels to scroll the PDF document vertically in the sprite upon opening it.

Examples `-- scroll the document 100 pixels down from the top`
`member("myPDFMember"). ScrollV = 100`

Platforms ALL except Mac OS X

See also [DisplayMode](#), [DisplayOption](#), [Page](#), [ScrollH](#), [ScrollBars](#), [Toolbar](#), [Zoom](#)

Toolbar

Syntax `member(whichMember). Tool bar = T/F`

Description Boolean. Show/hide Acrobat/Reader's standard toolbar at the top of the PDF Xtra sprite. True/False.

Examples `--hide the tool bar`
`member("myPDFMember"). Tool bar = FALSE`

Platforms ALL except Mac OS X

See also [DisplayMode](#), [DisplayOption](#), [Page](#), [ScrollH](#), [ScrollV](#), [ScrollBars](#)

UpdateFromURL

Syntax `member(whichMember). UpdateFromURL = whichURL`

Description Text. URL from which to download the updated document, on opening. PDF Xtra will verify the document at the specified URL only if the EnableUpdateFromURL property is set to TRUE. If no PDF file is specified, the link file name is used.

Examples `member("myPDFMember"). UpdateFromURL =`
`"http://www.myserver/myPDFs/"`



```
member("myPDFMember").UpdateFromURL =  
"http://www.myserver/myPDFs/myDoc.pdf"
```

Platforms ALL except Mac OS X

See also [EnableUpdateFromURL](#), [LinkFile](#)

Zoom

Syntax `member(whi chMember).Zoom = whi chzoom`

Description Symbol, integer. Start with specified scaling factor. This is an integer in the range 8 to 1600, or one of #actualSize, #fitInWindow, #fitWidth, #fitHeight or #fitVisible.

Examples `member("myPDFMember").zoom = 200`
`member("myPDFMember").zoom = #fi twidth`

Platforms ALL except Mac OS X

See also [DisplayMode](#), [DisplayOption](#), [Page](#), [ScrollIH](#), [ScrollIV](#), [ScrollBars](#), [Toolbar](#)



Appendix 4: Error codes

Errors for Mac and Win

-5	Wrong number of parameters.
-10	Invalid PDF Xtra method.
-20	Cannot open PDF document. Check pathname.
-25	Cannot download PDF document. Check URL or network connection
-30	No PDF document currently open.
-35	Cannot print. PostScript level must be 1 or 2.
-40	Cannot download PDF document. Cannot initialize network services.
-45	Cannot download PDF file. Director 5 does not support file downloads.
-50	Memory allocation error.
-55	Cannot load PDF document. Acrobat cannot run while Adobe Reader is already open.
-60	Acrobat not properly installed.
-65	Adobe Reader not properly installed.
-70	Handler not available with Adobe Reader.
-80	The host application doesn't support file download.
-90	Download error. Cannot create destination file.
-100	Download error. An error occurs when writing to the destination file.
-110	An error occurred while launching the custom application.
-120	Cannot list system's available drives.
-130	Application cannot be found in specified path.
-140	Application cannot be launched, Acrobat Exchange is already running.
-150	Application cannot be launched, Acrobat is already running.
-160	Application cannot be launched, Adobe Reader is already running.

Mac only

-500	Cannot display PDF document: missing PDFViewer component.
-505	An error occurred while trying to load PDFViewer.
-510	Unsupported PDFViewer version.
-515	Unreadable PDF file.
-520	Acrobat and/or Adobe Reader not properly installed.
-525	An error occurred while launching Acrobat/Reader.
-530	Cannot load PDF document. More than one instance of Acrobat is currently open.



-535 Cannot load PDF document. Xtra cannot load Adobe Reader while Acrobat is open.

-540 Handler not available on the Macintosh platform.

-545 PDF Xtra requires Acrobat/Reader version 4 or higher.

-550 Cannot call PDF Xtra methods when Director is not playing.

-555 The current Macintosh version of PDF Xtra cannot have more than one active sprite at a time.

-560 Cannot load Acrobat or Reader because memory is too low. Try quitting some applications and start again.

Windows only

-1000 Cannot find Adobe Reader ActiveX control.

-1005 Cannot launch Adobe Reader.

-1010 Cannot open PDF document. It is password-protected or already open by another application.

-1020 Acrobat and/or Adobe Reader not properly installed.

-1030 Acrobat not properly installed. PDF Xtra will use Adobe Reader instead.

-1040 Memory allocation error or Acrobat not properly installed.

-1050 Memory allocation error or Adobe Reader not properly installed.

-1060 Cannot display PDF document. Acrobat Exchange is running. Please close Acrobat Exchange.

-1070 Cannot use Acrobat. Adobe Reader is running. Please close Adobe Reader.

-1080 Memory allocation error occurred during print process.

-1090 No printer available or bad printer information.

Warnings

5 You need to save this movie before using PDF Xtra's Relative File Path options.

10 You need to save this movie to ensure it is licensed for PDF Xtra.

15 Invalid update URL.

20 Cannot establish http connection.

25 Error while attempting to open an http connection.

30 Authentication failed.

35 Redirection failed.

40 Internet service type must be http.

45 Unable to copy the downloaded file.

50 The downloaded file is not a valid PDF document.

55 The specified remote file doesn't exist.

60 Download warning. Download cancelled by user.



Index

A

Absolute Path, 22
Acrobat, 8
 detecting end-user's configuration, 36
Acrobat/Reader, 8
ActiveX, 34
Adobe Reader, 8
Auto-installation, 33

B

Bookmark and Pages, 20

C

COM component, 34
Compatibility Chart, 41
Contact Information, 15
Creating Sprites
 of type PDF Xtra, 16
Custom Display Options, 20

D

Delivering to the End-User, 32
Display Mode, 20
DLL, 34
Document Display Options, 20

E

Error Codes
 (Appendix 4), 61

F

File Path Options, 22

I

Installation, 9
Integration New Media, Inc, 15

K

Known Issues, 13

L

License Agreement
 (Appendix 1), 6
Licensing, 11
Limitations, 12
Lingo Compatibility Chart
 (Appendix 1), 40
Link File, 18, 19

M

Mailing List
 PDF Xtra-L, 13
Member Options dialog box, 16
Methods, 56

O

Opening PDF documents
 avoiding flicker, 37, 38
Options dialog box, 16



P

Pages Only, 20
PDF (Portable Document Format), 8
PDF_AcrobatInfo, 53
PDF_Close, 43
PDF_CloseAcrobat, 24, 53
PDF_Error, 43
PDF_FindText, 43
PDF_GetNumberOfPages, 44
PDF_GetPageNumber, 45
PDF_GetText, 45
PDF_GoFirstPage, 45
PDF_GoLastPage, 46
PDF_GoNextPage, 46
PDF_GoPreviousPage, 46
PDF_GotoPage, 46
PDF_Help, 54
PDF_LaunchAdobeApp, 54
PDF_Open, 47
PDF_Print, 49
PDF_Save, 49
PDF_ScrollTo, 50
PDF_SetDisplayMode, 51
PDF_SetProgressIndicator, 55
PDF_Status, 51
PDF_Version, 55
PDF_ZoomTo, 52
Projector, 32
Properties
 Alert, 56
 DisplayMode, 56
 DisplayOption, 56
 EnableUpdateFromURL, 57

LinkFile, 57
Page, 58
Password, 58
PathType, 58
ScrollBars, 58
ScrollH, 59
ScrollV, 59
ToolBar, 59
UpdateFromURL, 59
Zoom, 60

R

Registration, 11
Relative to Movie, 18

S

Scroll H/V, 20
Show Alert on Error, 21
Show Progress Bar, 21
Show Scrollbars, 20
Show Toolbar, 20
Start at Page, 20

T

Terminology, 8
Thumbnail and Pages, 20
Transparency, 37

W

Windows Registry, 34

Z

Zoom, 20



