

TM

# Emergentcode

Simple, Stable, Affordable



## SysHawk 1.0.0 Users Manual

# **Table of Contents**

**I. Introduction to the SysHawk Log Agent**

**II. Installing the SysHawk Log Agent**

## I. Introduction to the SysHawk Log Agent

SysHawk is a unified software package with many separate modules that can be used together or separately to perform simple and complex Information Technology tasks.

The SysHawk Log Agent was designed to run as a scheduled task allowing for excellent integration with the Windows operating system not only in the server environment but also on local workstations on a LAN or WAN.

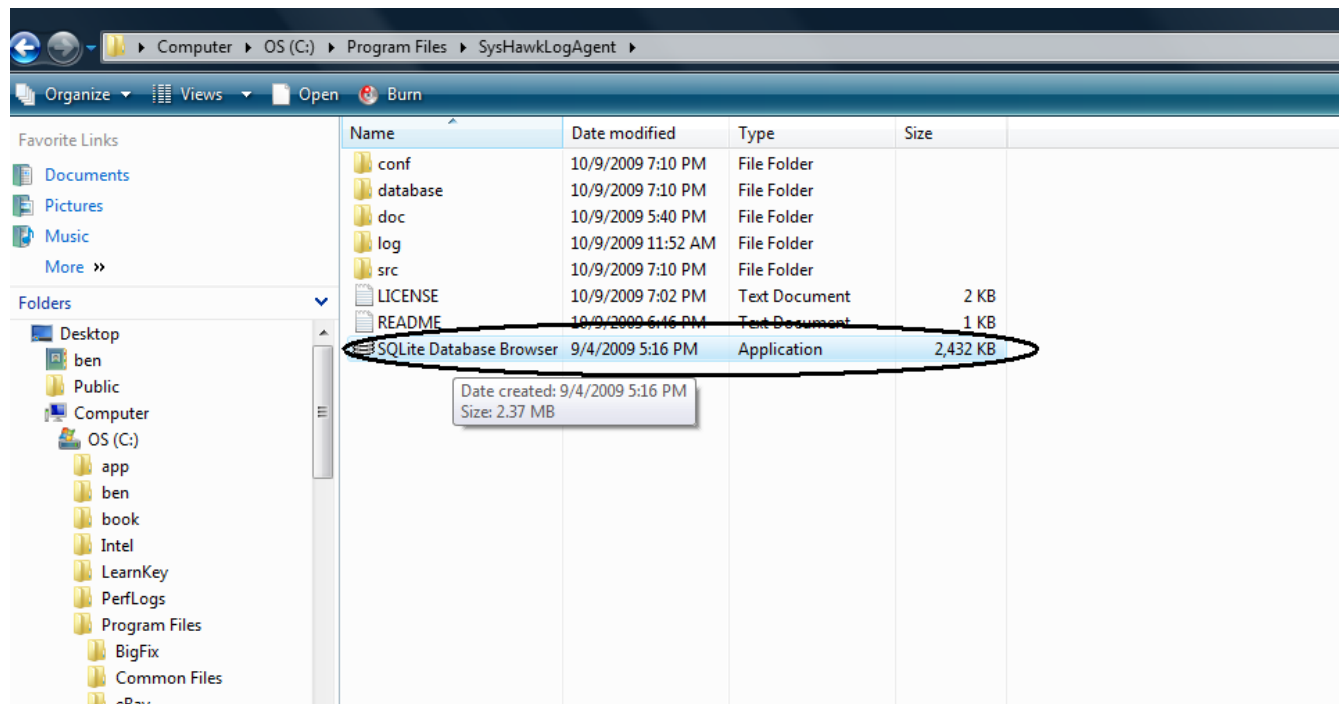
Control of all SysHawk Agent Modules is through a combination of a SQLite database and configuration files. The SQLite database is manipulated with an open source freely distributable program call SQLite Database Browser, which can be found at its web site:

<http://sqlitebrowser.sourceforge.net/>

## II. Installing the SysHawk Log Agent

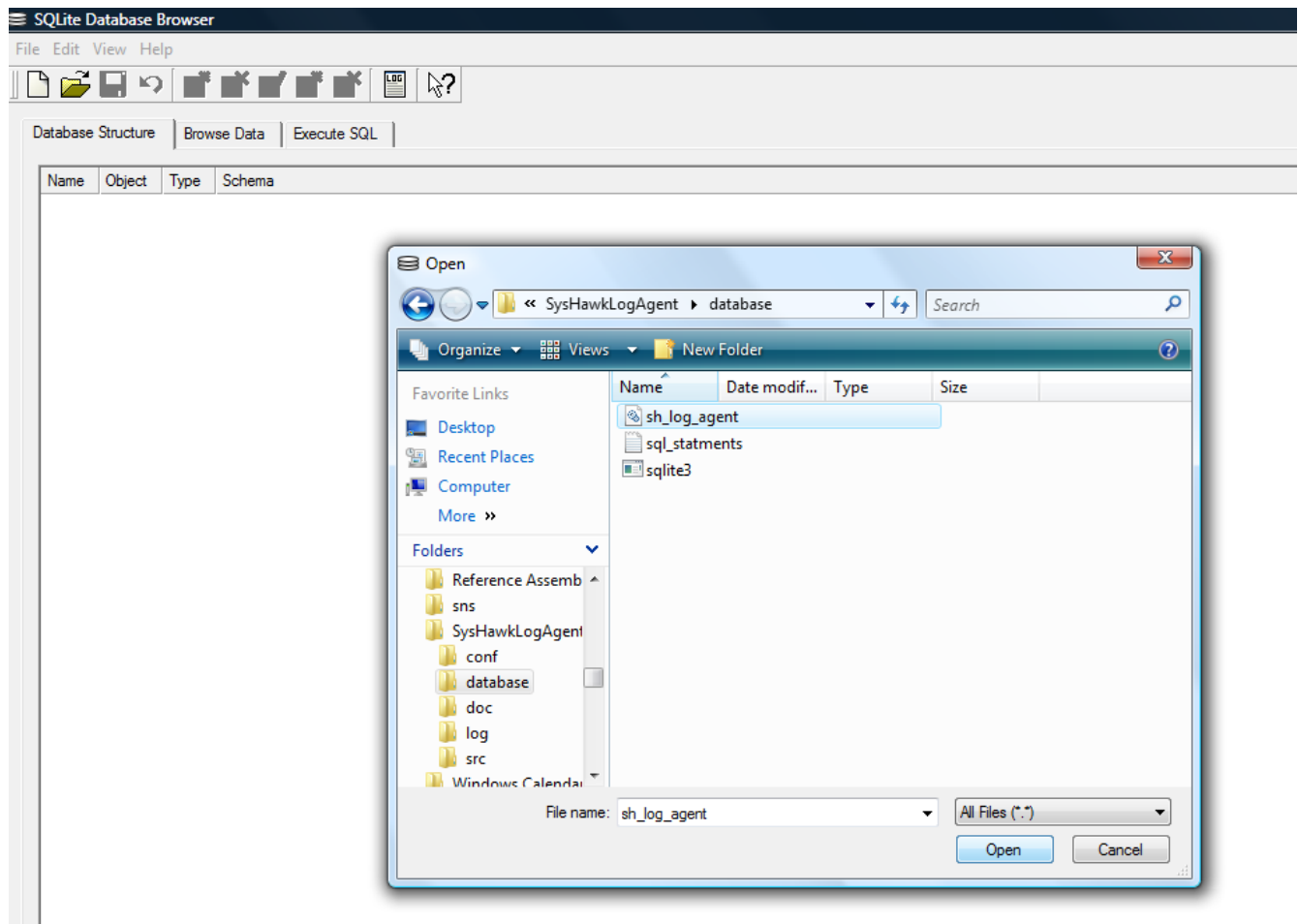
Your SysHawk Log Agent is contained in one .zip file distribution. The agent can be installed in under 5 minutes in a few simple steps.

1. **Unpack the .zip file into C:\Program Files:** In the end you should have a C:\Program Files\SysHawkLogAgent folder. Within this folder should be the following directories (conf, database, doc, log, and src.)
2. **Enter your registration code:** Open the SQLite Database Browser located in C:\Program Files\SysHawkLogAgent

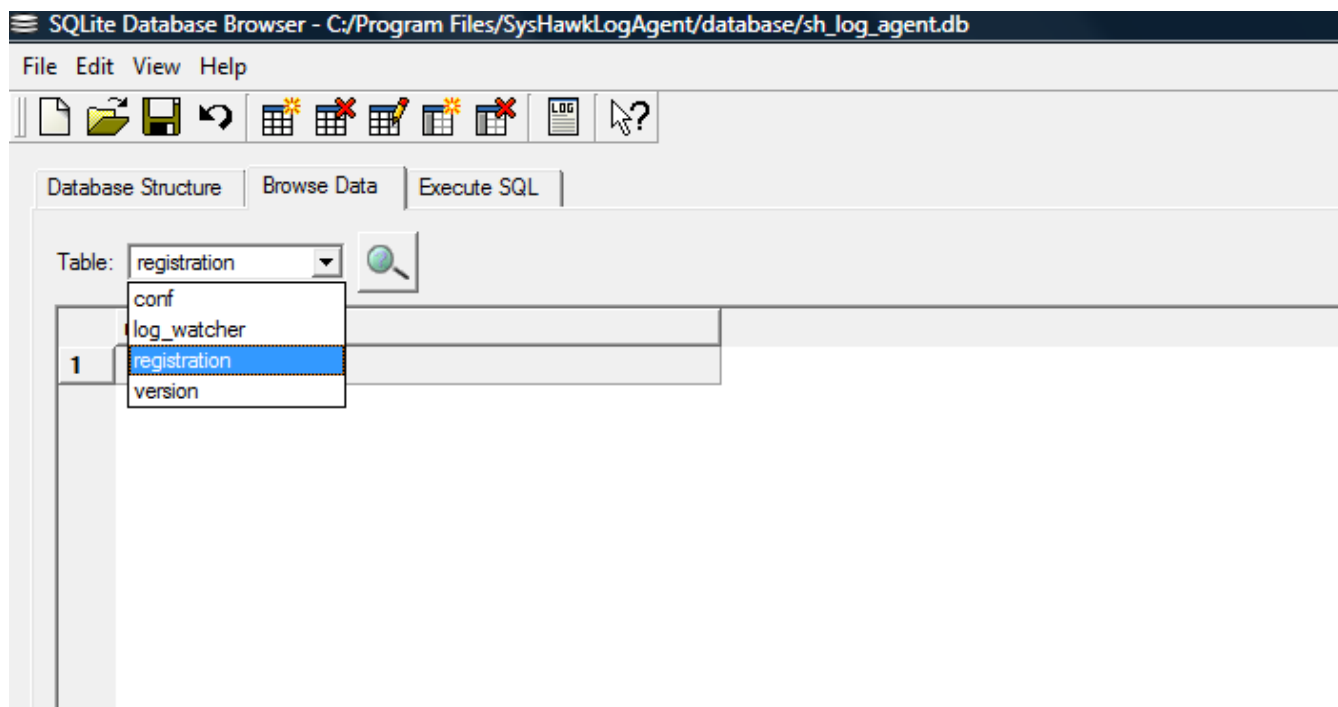


- When the database browser is open click the open icon that looks like an open folder and

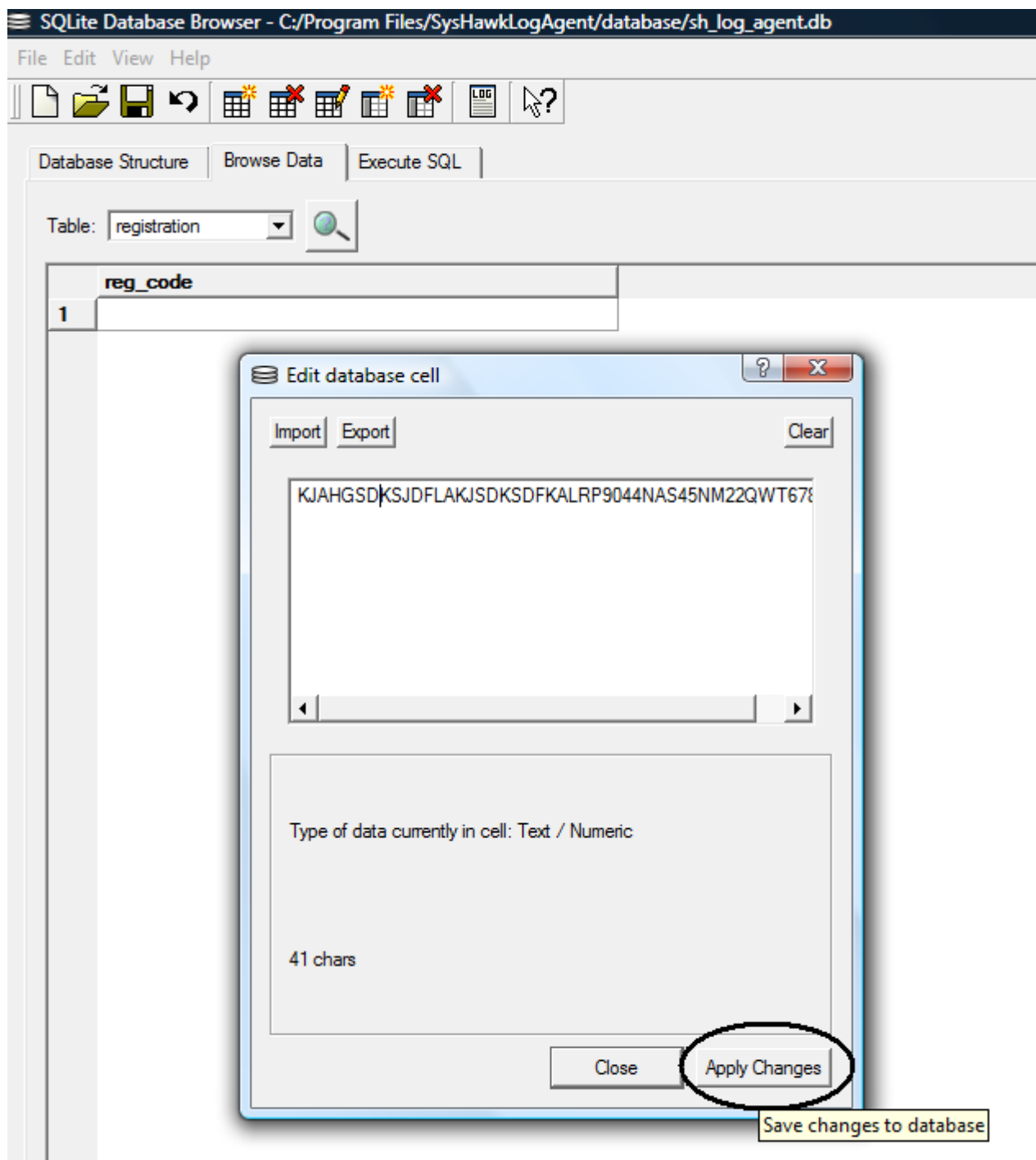
navigate to the SysLogAgent database file located at C:\Program Files\SysHawkLogAgent\database. Select the file named sh\_log\_agent.db and click open as shown below.



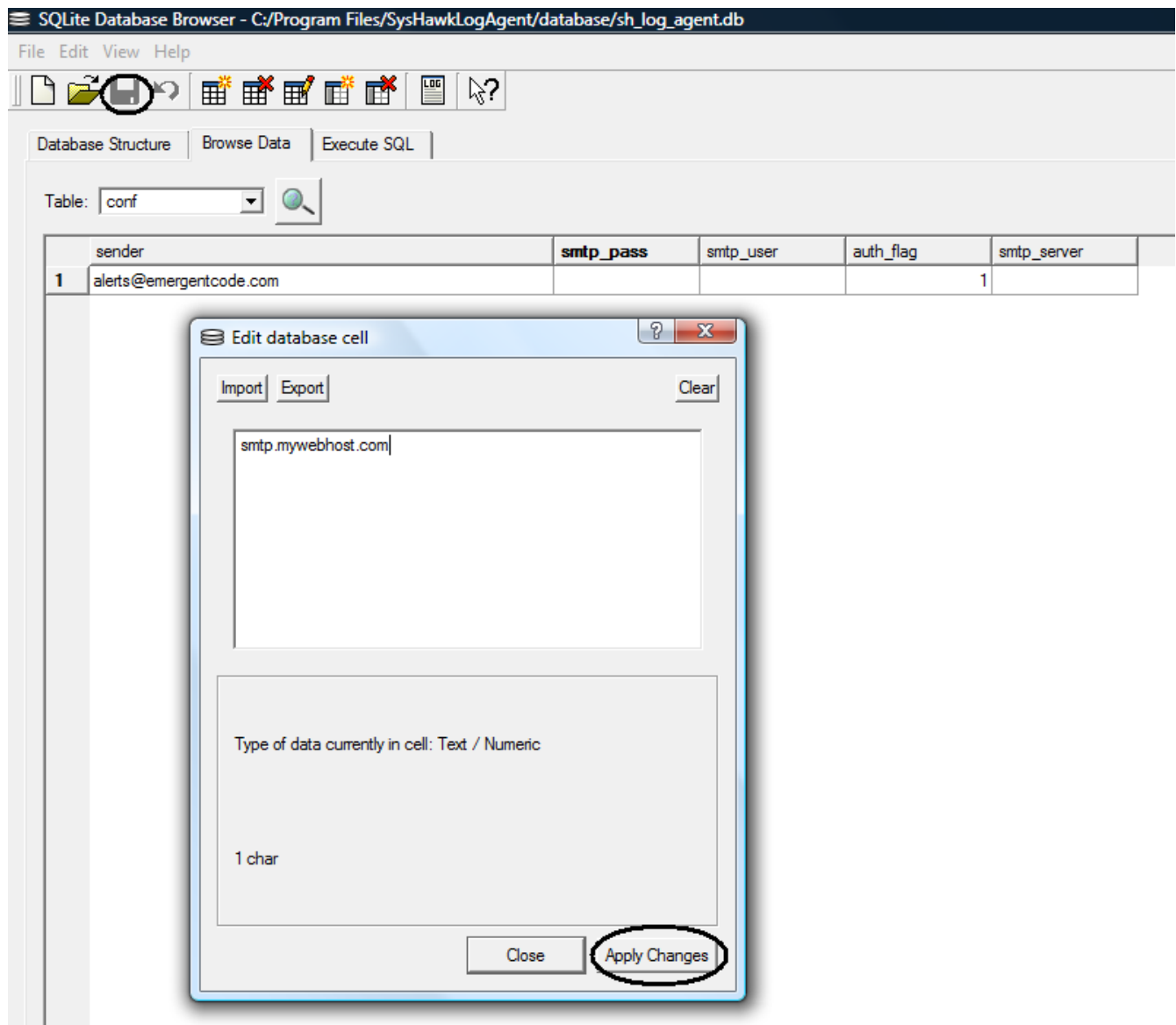
- Click on the browse tab and select the registration table in the drop down list, which will automatically select the table and display its contents.



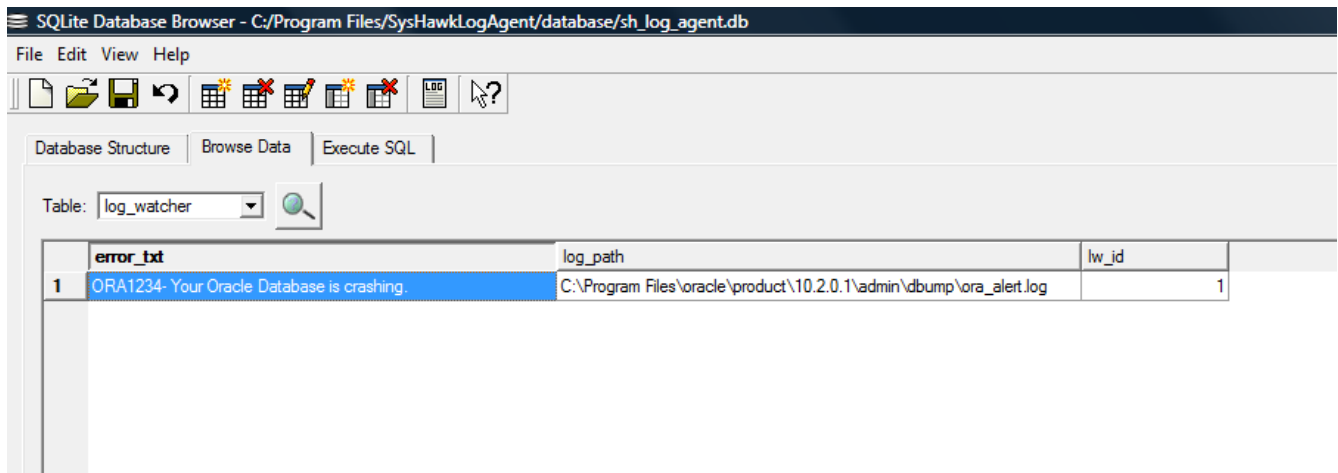
- Double click the field in the database and in the data entry window copy and paste in your registration code that you have received in an email after you purchased the log agent. After pasting your registration number click Apply Changes and then also click the save button that looks like a disk to the right of the open folder in the top toolbar.



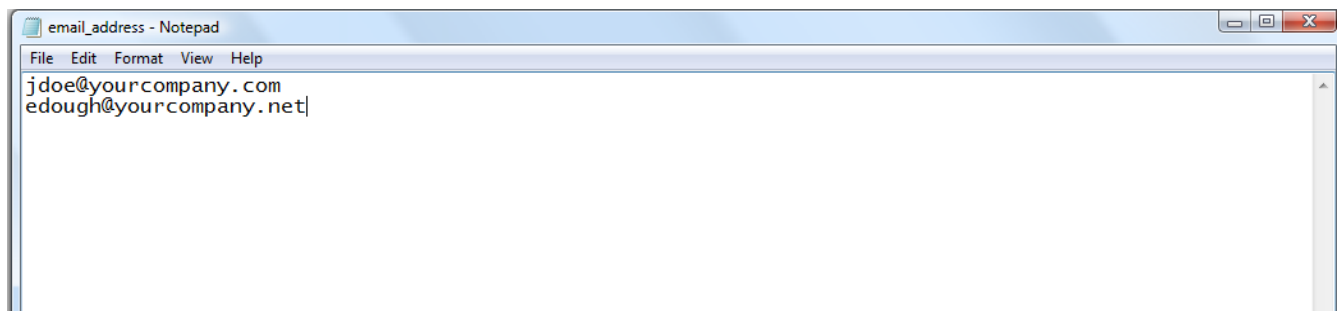
- Congratulations your agent has been registered only a few more configuration settings to go!
3. **Follow the same steps to configure your SMTP settings:** Select the conf table in the table drop down list. Enter each field as seen below clicking **Apply Changes AND SAVE** buttons after each change. auth\_flag refers to whether your SMTP provider requires authorization if none is required set this to 0. See Below.



4. **Enter the files to monitor:** You can monitor an unlimited number of files. Add the fields in the log\_watcher table that you wish to monitor you will receive an alert if the text you enter is matched in the file you specify. See the example below.



5. **Enter your email recipients:** In the configuration file located in **C:\Program Files\SysHawkLogAgent\conf** named **email\_addresses**, enter the email addresses of all people you wish to receive errors from the log agent, there is no limit. Click file | save to save the text file. See example file below.



6. **Schedule the agent to run:** One more step! In your control panel go to task scheduler and schedule the agent to run. The agent executable is located in **C:\Program Files\SysHawkLogAgent\src\dist** and is named **ShLogAgentMain.exe**. You should now start seeing information written in the log directory located at **C:\Program Files\SysHawkLogAgent\log**. The Windows Task Scheduler is different between Windows Operating System version so if you need specific help with this final step email Emergentcode support at [support@emergentcode.com](mailto:support@emergentcode.com) or visit the support section of the web site as [www.EMERGENTCODE.com](http://www.EMERGENTCODE.com)