

- English -

# **EOS M**

## **Firmware Update Procedures**

### **Precaution**

- A power failure during the firmware writing operation may disable the camera.
  - Use a fully charged Battery Pack or dedicated AC Adapter Kit (Optional) for the firmware update.
  - Do not shut off the power during the firmware writing operation.
- Do not press any camera buttons during the firmware writing operation.
- Do not open the card slot cover during the firmware writing operation.
- Before the firmware update, please remove the lens, external Speedlite, and all other accessories from the camera.

## **Firmware Update Procedures**

- In the following instructions, x.x.x. indicates either the current firmware version or the firmware version for the update.

### **(1) Prepare the items required to update the firmware.**

1. Camera body
2. Dedicated Battery Pack (The battery pack must be fully charged) or dedicated AC Adapter Kit (Optional)
3. SD card (64MB or more, 64GB or less)
4. Firmware update file (EOSM1XXX.FIR)

- In case of using the SD card reader, follow the procedure from Step (2) onward. In case of not using the SD card reader, follow the procedure from Step (3-1) onward.

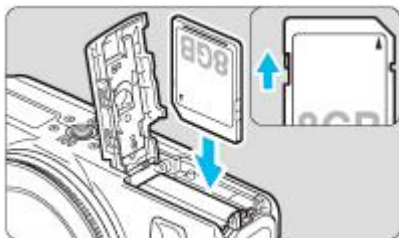
### **(2) Copy the firmware update file to the SD card.**

1. Insert the SD card that has been formatted in the Camera into the SD card reader.
2. Copy the firmware update file to the first window that appears when the SD card is opened (the root directory).
3. Remove the SD card from the card reader.

\*When removing the SD card, be sure to do so as described in the documentation for the computer or the card reader.

\*If the firmware update file is placed in subfolder of the SD card, the camera will not see it.

4. Insert the SD card with the firmware into the camera.



5. Press the camera's power button to switch it on.



6. Turn the camera's mode dial and set it to "still photos".



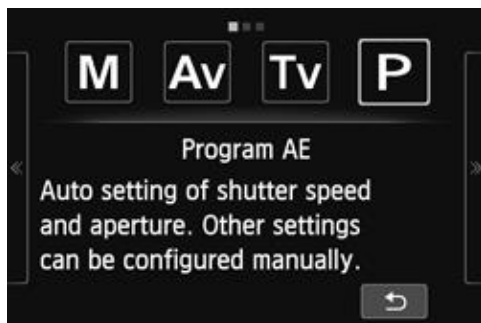
7. Tap the shooting mode icon in the top-left of the screen.



8. Tap the screen and select the Creative Zone which is for modes such as “P”.

\*By touching the arrow on the edge of the screen you can move left or right through the display screens.

The shooting mode screen is on the third page, the Creative Zone is on the first page and the Basic Zone is on the second page.



9. Press the Main Dial to select the "Firmware Ver.x.x.x" item at the bottom of the "Set-up 4 (Yellow)", and then press the <SET> button.



10. The firmware update screen will appear.

Press the Main Dial to select [OK], and then press the <SET> button.

Follow the procedure from Step (4) onward.

\*If the firmware update screen does not appear on LCD monitor, the firmware update file may not have been properly copied to the SD card, so please try again starting from step (2).



➤ Section (3-1) and later sections explain how to update the firmware using EOS Utility.

### **(3-1) Prepare to carry out the update.**

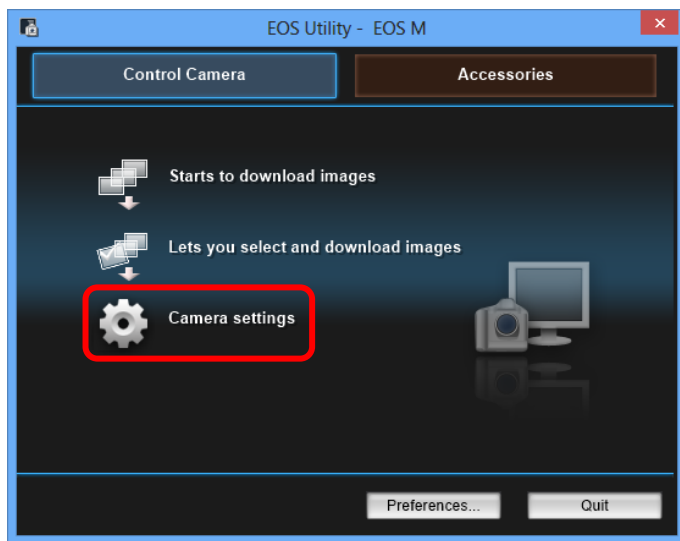
Place the file that you downloaded from the website on the computer's desktop or other specific place.

### **(3-2) Connect the camera and the computer.**

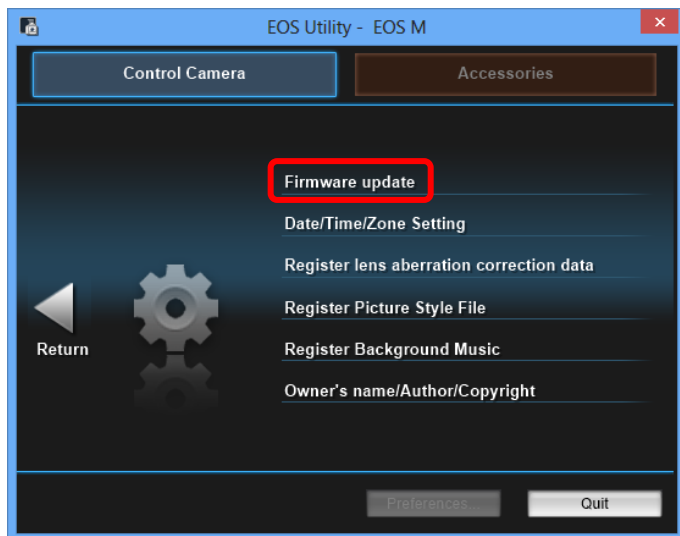
1. Insert the SD card that has been formatted in the camera into the camera.
2. Connect the camera and the computer with the USB cable, and then set the camera's power switch to <ON>.

### **(3-3) Start the firmware update.**

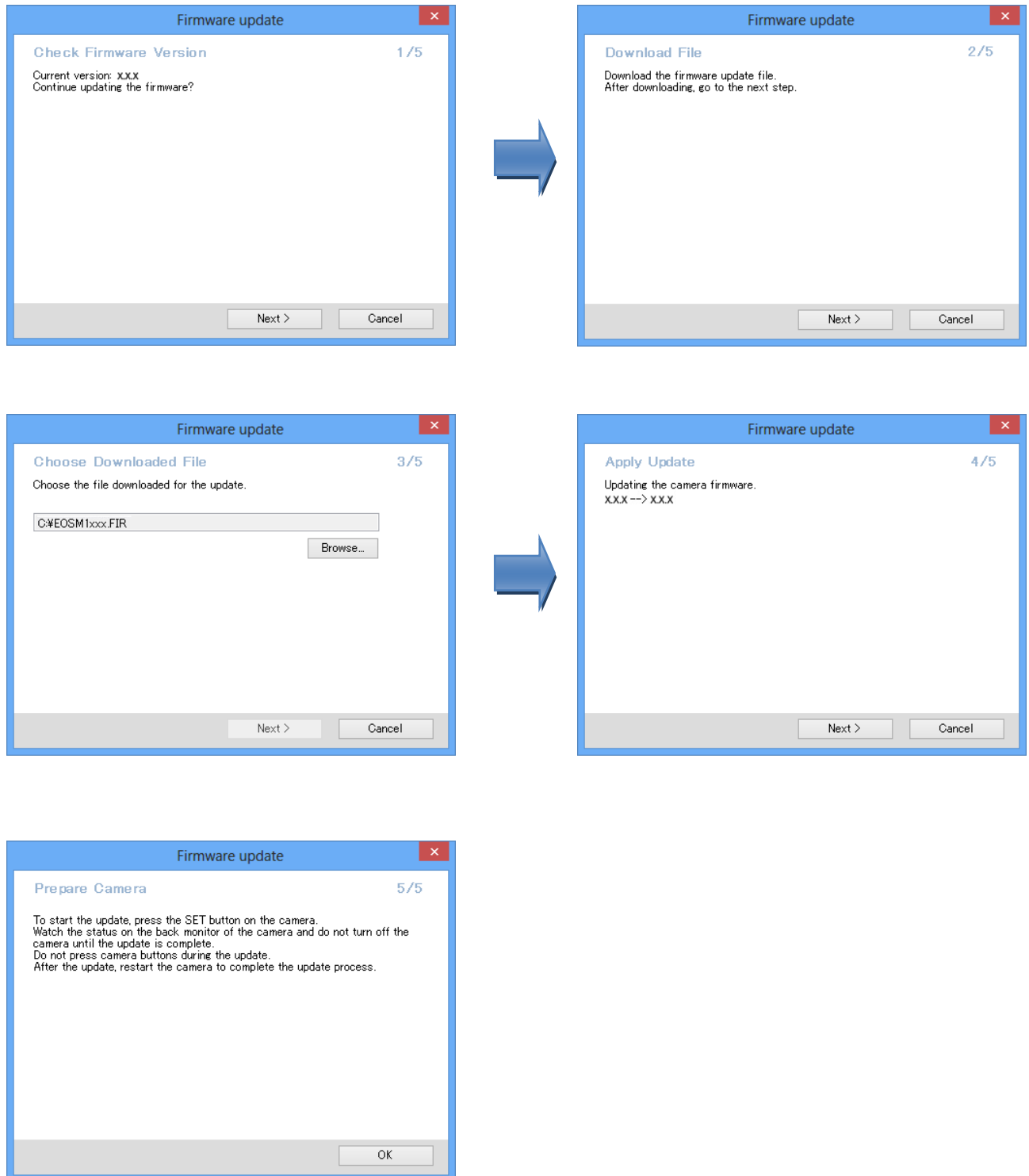
1. Start EOS Utility.
2. Click the [Camera settings] button.



3. Click the [Firmware update] button.



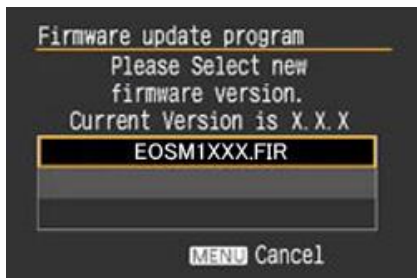
4. The firmware update procedure will appear. Follow the instructions shown on the screen.



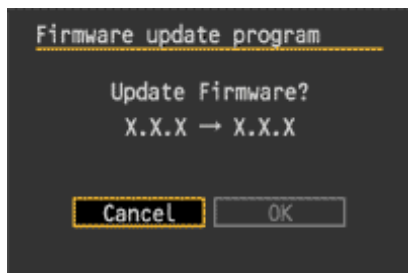
5. Follow the procedure from Step (4) onward on the camera.

## **(4) Update the firmware.**

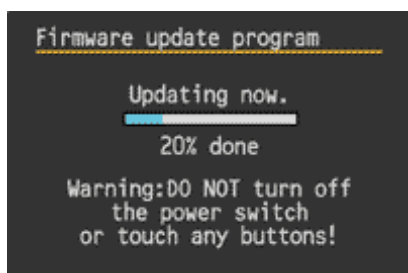
1. The screen will appear on the camera's LCD monitor.



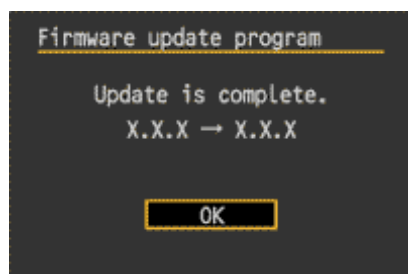
2. If you press the <SET> button, a confirmation screen will appear, so check the firmware update shown, press the Main Dial to select [OK], and press the <SET> button again to start the firmware update.



3. The message will appear during the update.



4. When the update is completed, the message will appear on the camera's LCD monitor.
5. Complete the firmware update by pressing the <SET> button.



The firmware update is now completed.

When the firmware update operations are finished, turn the camera <OFF> and remove battery from the camera for at least two seconds. This will cause the new firmware to take effect after the battery has been reloaded and the camera is turned on.

Format the SD card before using it again.

## **If an ERROR message appears during the firmware update**

If this screen appears, remove the battery and check to make sure that there are no problems with the battery capacity or with the firmware update file on the SD card.

If there are no problems, repeat the update operations again.

If the problem persists, please contact the Canon Customer Support Center in your region.

