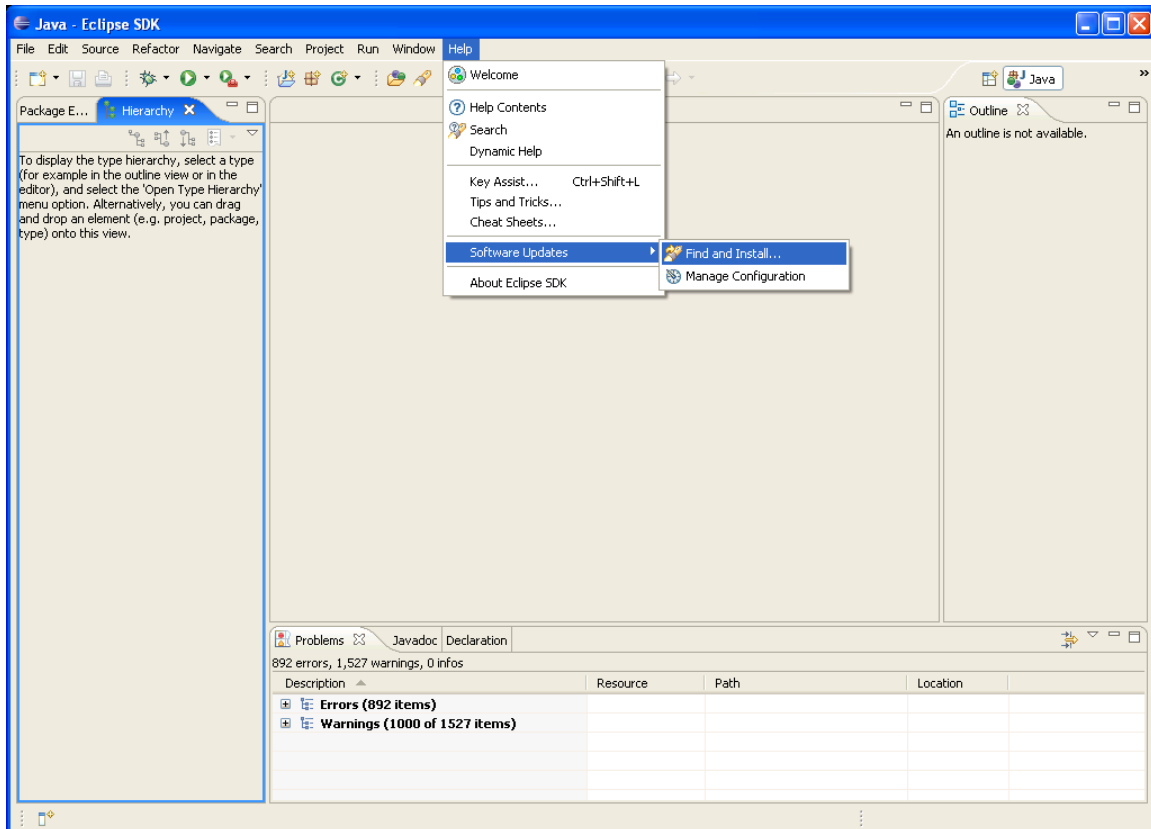


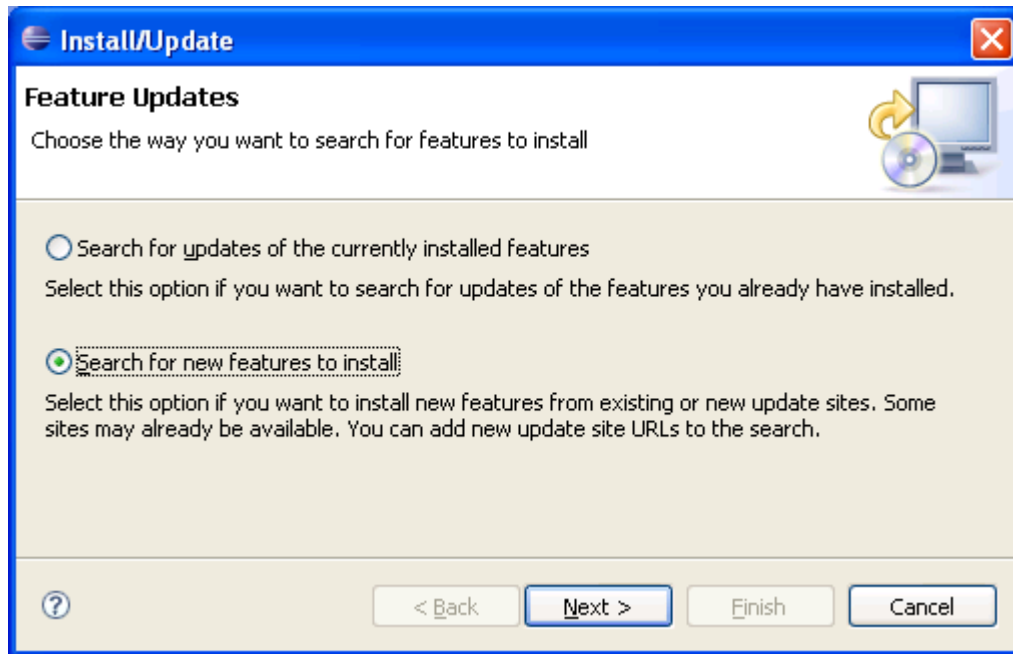
Antodyne Eclipse installation Procedure

This document describes Antodyne installation procedure in Eclipse 3.2 development environment.

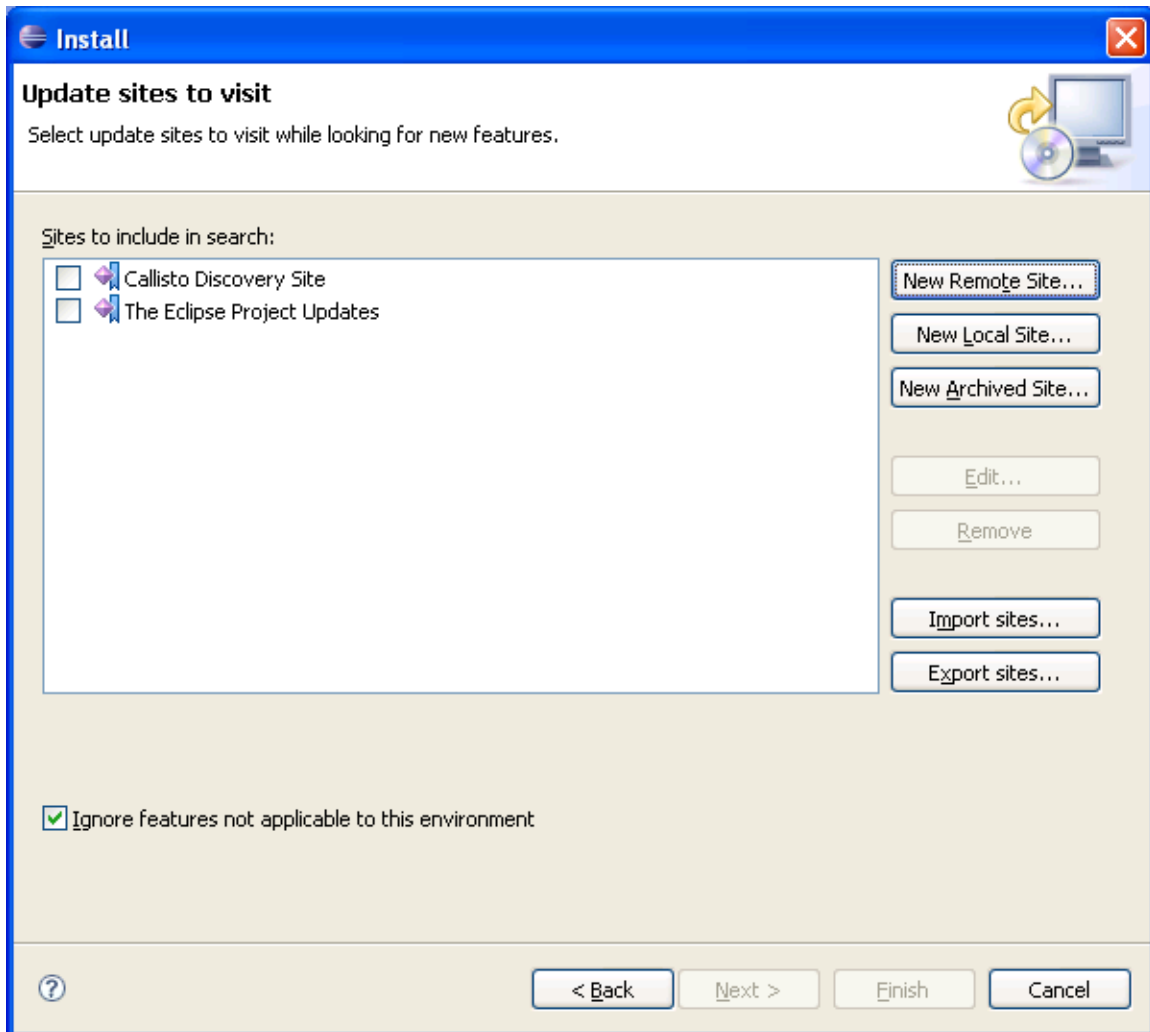
From Eclipse Help menu open Software Updates -> Find and Install window as shown on the image below.



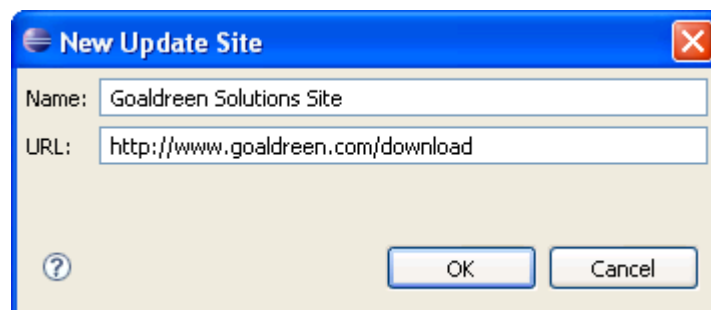
Select 'Search for new features to install' and click Next.



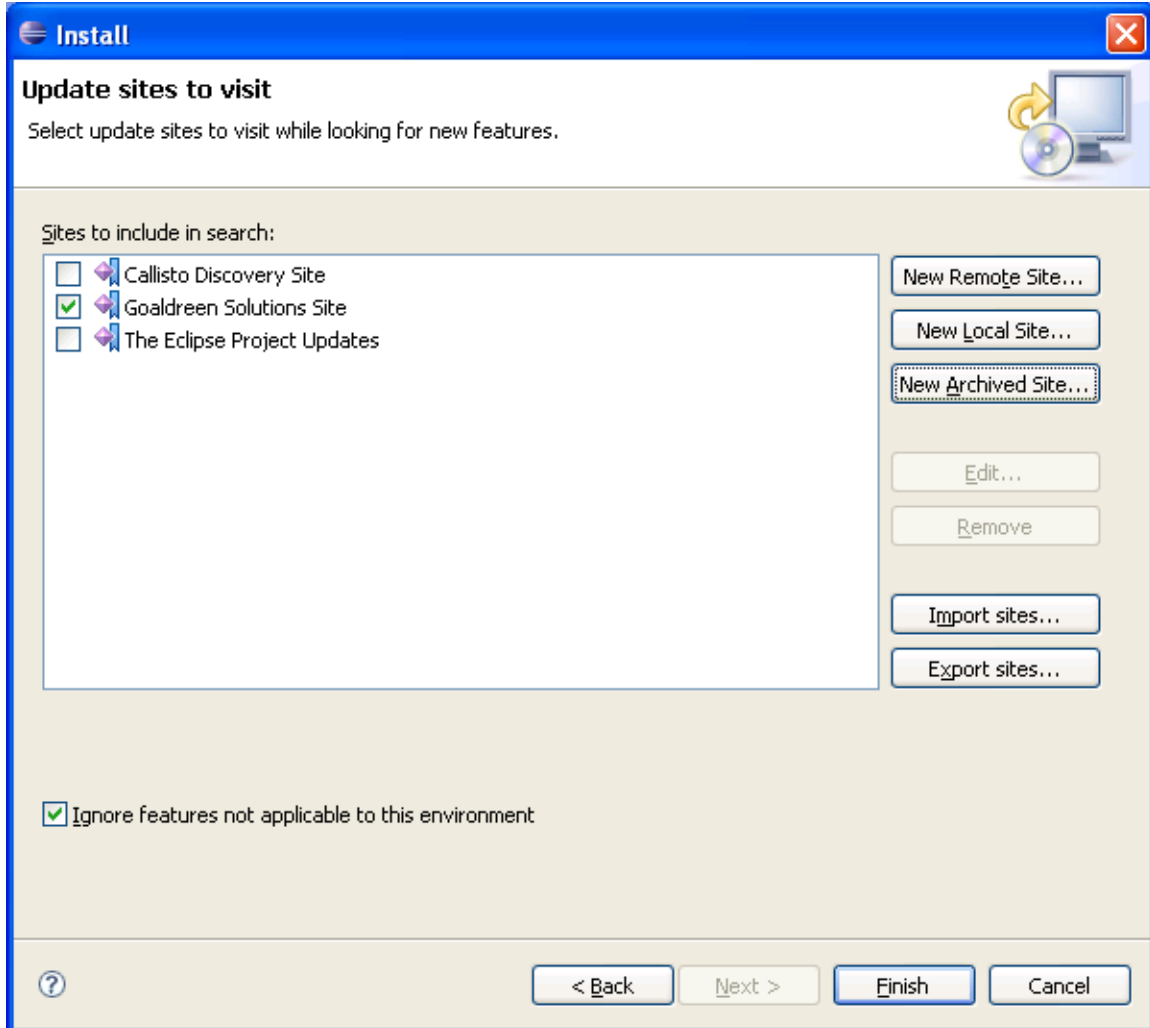
On the next window push 'New Remote Site' button.



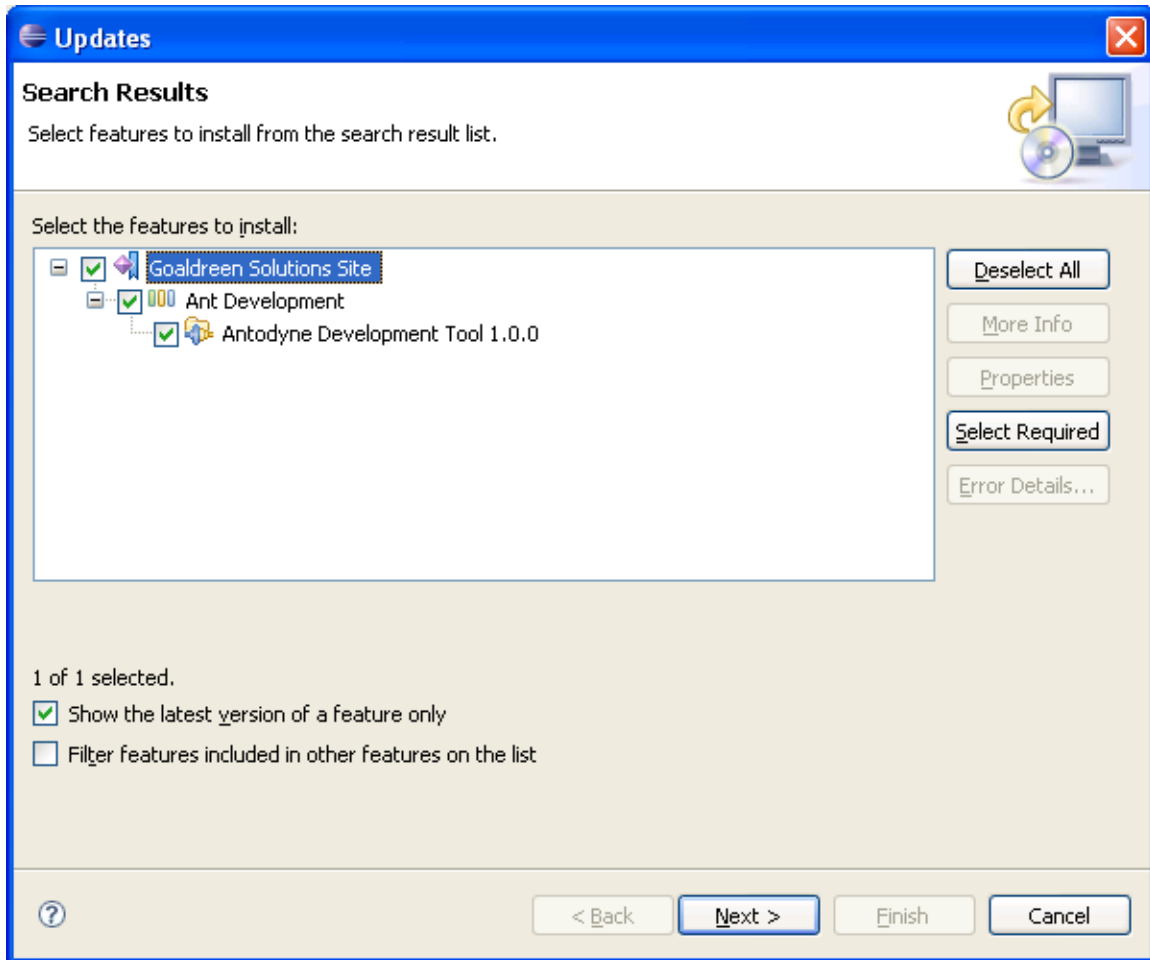
In the next window provide the name and URL of Antodyne's download site. Enter <http://www.goaldreen.com/download> in the URL field. Add a meaningful name such as shown on the image below and click 'OK'.



A new site will appear on the list of sites as shown below. Click 'Finish' to proceed.



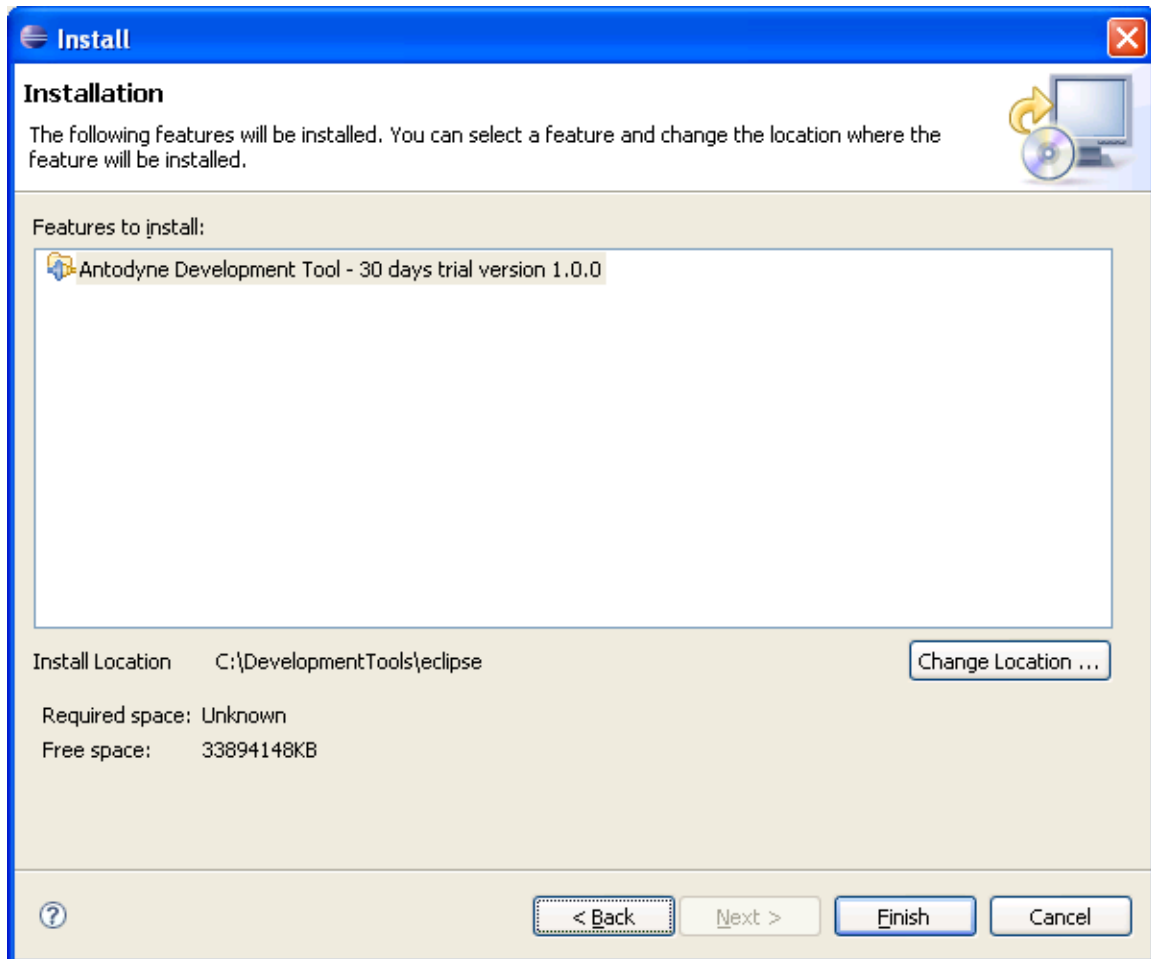
In the next window check 'Antodyne Development Tool 1.0.0' and the parent elements will be selected as well. Push the 'Next' button.



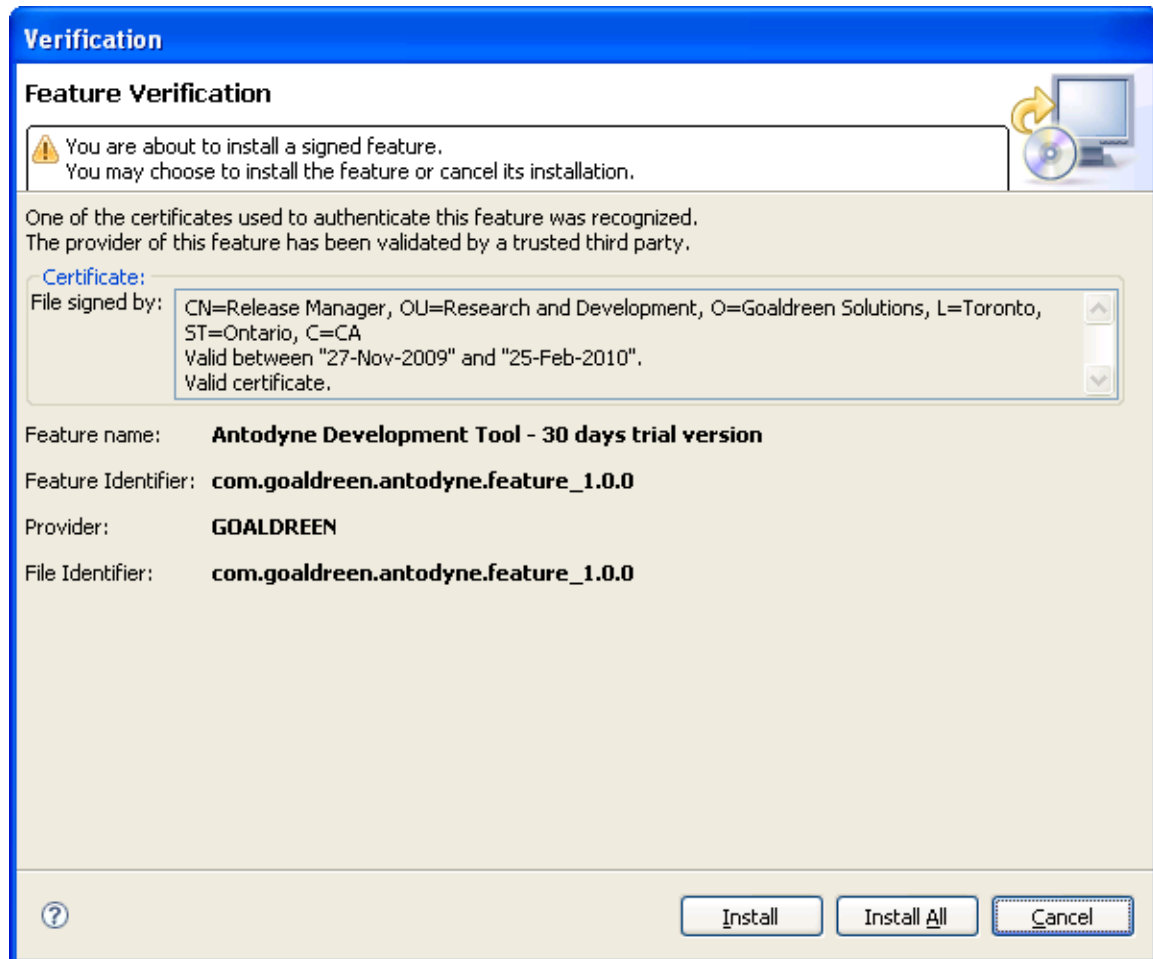
Accept 'The terms in the license agreement' and push the 'Next' button.



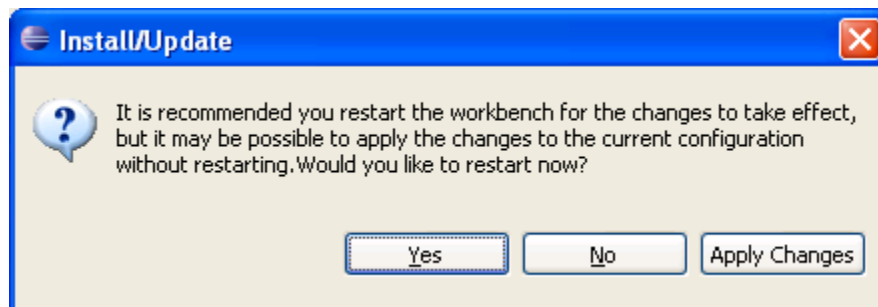
Verify installation location and push 'Finish'.



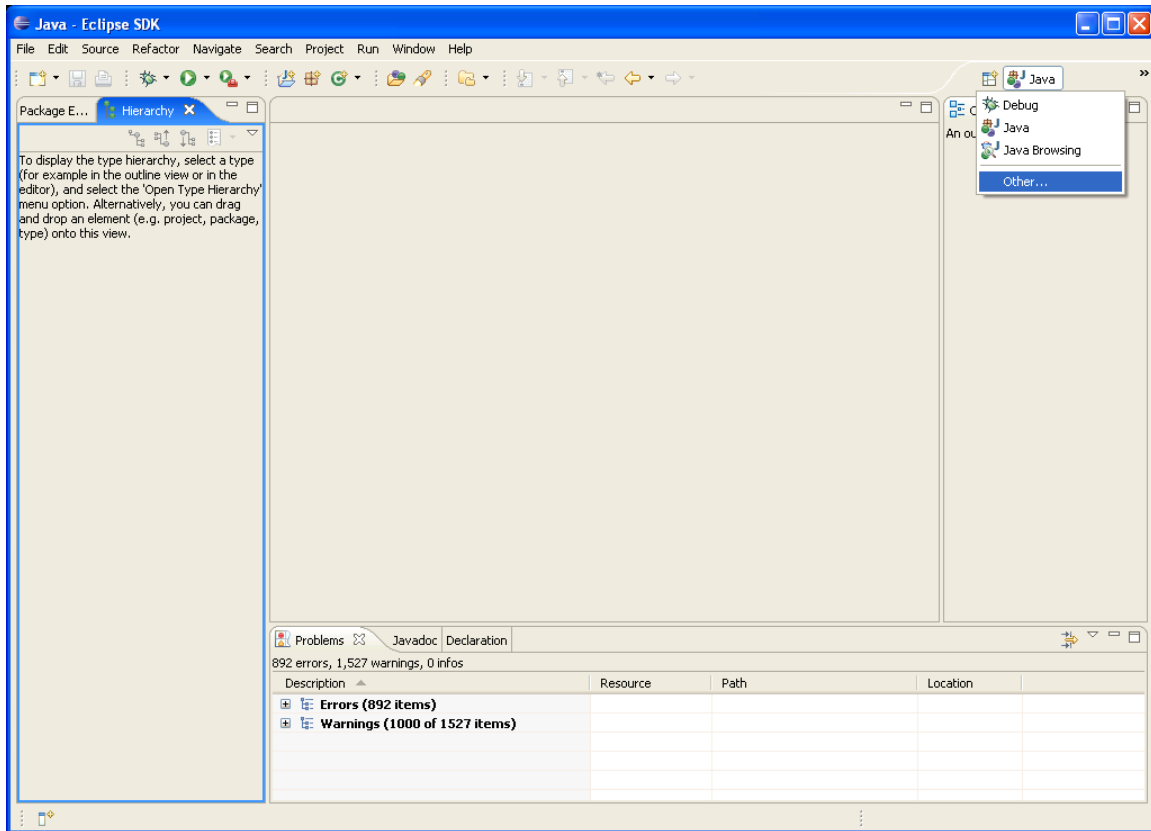
Verify the product signature and click 'Install' to start the installation.



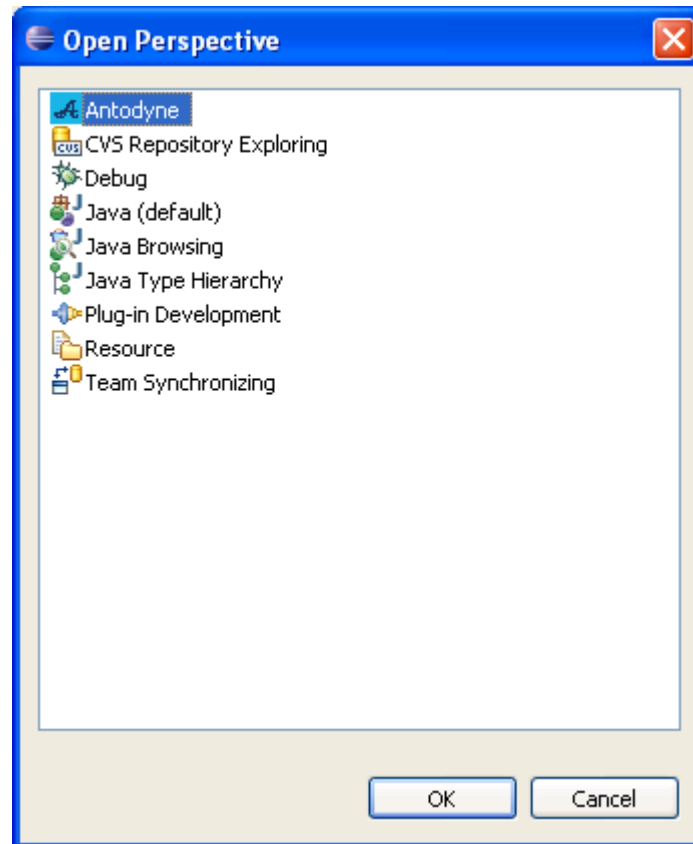
After the installation is completed a new window prompting to restart the workbench will pop up. Click 'Yes' to restart Eclipse.



After Eclipse comes back up, verify the ‘Antodyne’ perspective appears in the list of perspectives by clicking the ‘Other’ button as shown on the following image.



Select 'Antodyne' perspective and click 'OK'.



Antodyne views will be shown in the Workbench. Antodyne Development Tool is ready to use.

