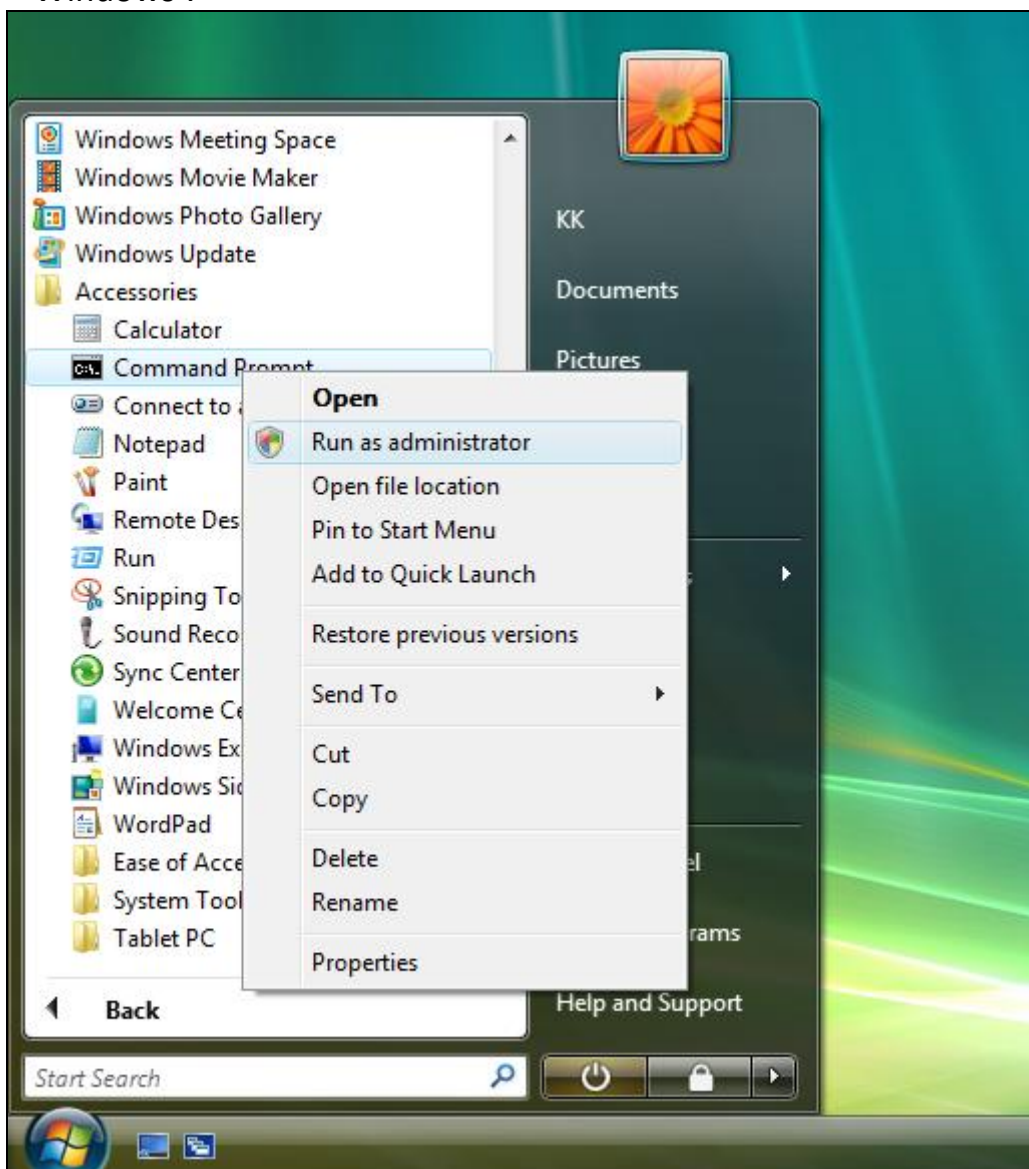


In [Windows Mode]

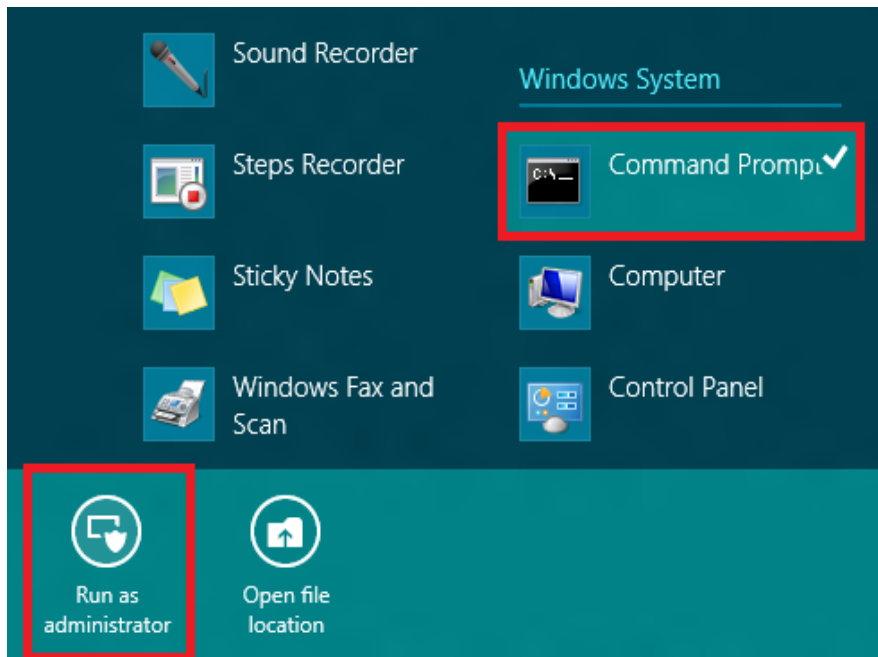
- 1.1 Get Acer BIOS Package.
- 1.2 Copy "WIN" and "ROM" folders including files to a storage device.
- 1.3 Power on System and press during POST LOGO to entry BIOS setup.
- 1.4 Set [Authentication]->[Secure Boot]->Disable.
- 1.5 Press <F10> or select [Exit]->[Save & Exit Setup] to save changes.
- 1.6 Boot to Windows.

[By Windows command line](#)

2. Run Command Prompt as **Administrator** in Windows.
< Windows 7>

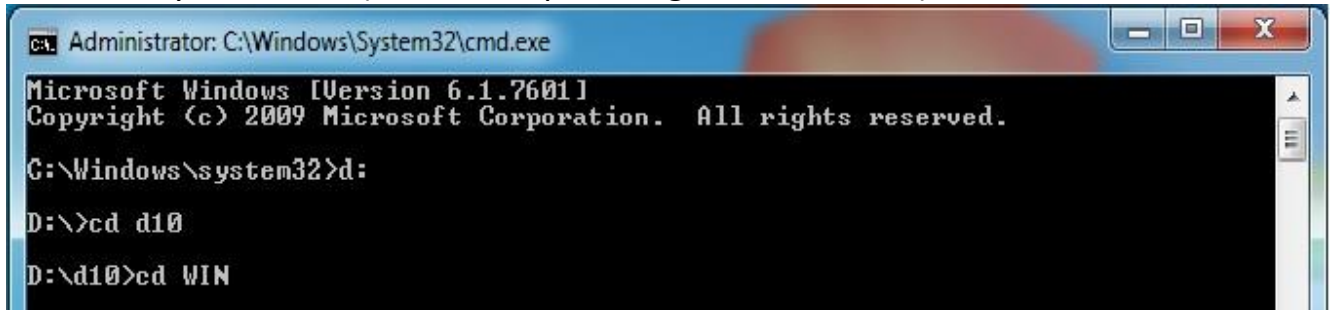


< Windows 8 >



Windows

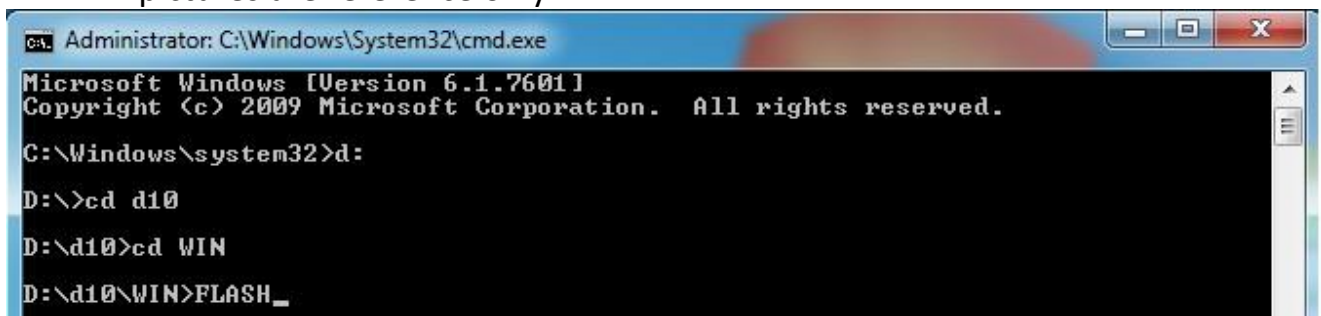
2.1 Key in 'cd win' (Go to BIOS path , e.g. "E:\D10\WIN")



```
Administrator: C:\Windows\System32\cmd.exe
Microsoft Windows [Version 6.1.7601]
Copyright (c) 2009 Microsoft Corporation. All rights reserved.

C:\Windows\system32>d:
D:\>cd d10
D:\d10>cd WIN
```

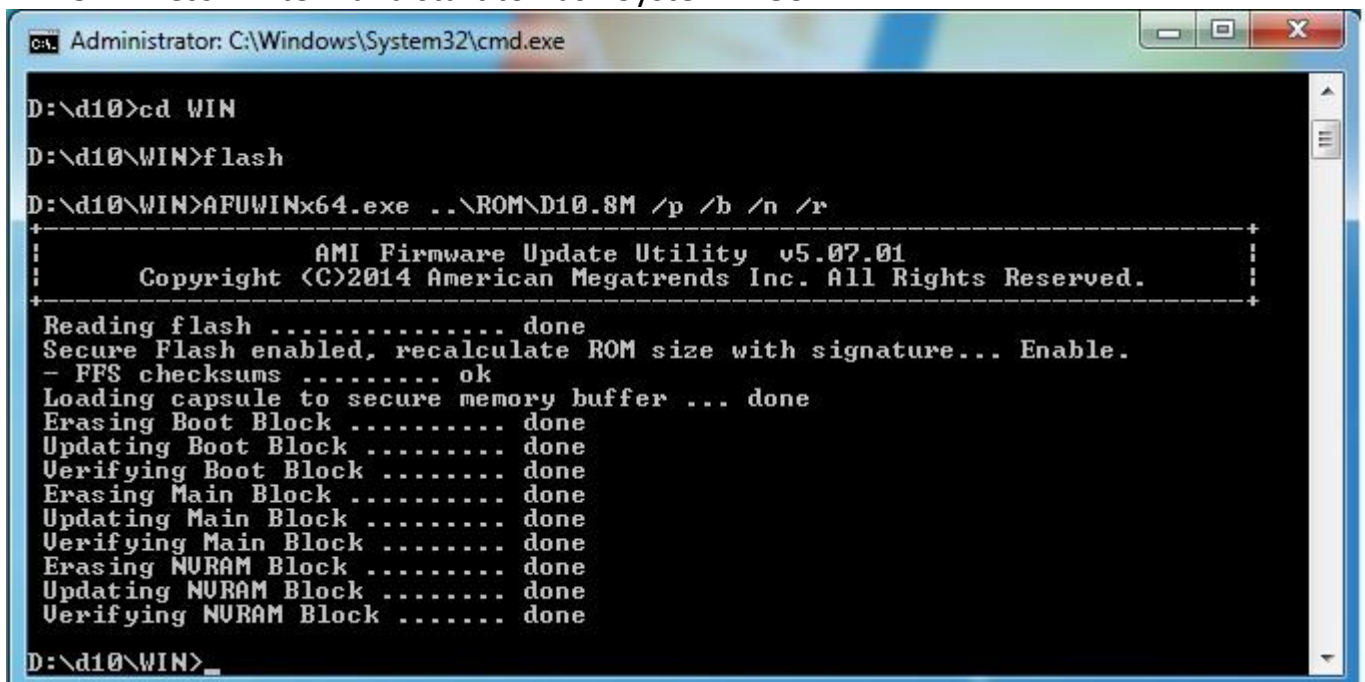
- 2.2 a. Key in 'flash.bat' or 'flash' for 32-bit Windows and following pictures are reference only.
b. Key in 'flash_x64.bat' or 'flash_x64' for 64-bit Windows and following pictures are reference only.



```
Administrator: C:\Windows\System32\cmd.exe
Microsoft Windows [Version 6.1.7601]
Copyright (c) 2009 Microsoft Corporation. All rights reserved.

C:\Windows\system32>d:
D:\>cd d10
D:\d10>cd WIN
D:\d10\WIN>FLASH_
```

2.3 Press <Enter> and start to flash System BIOS



```
Administrator: C:\Windows\System32\cmd.exe

D:\d10>cd WIN
D:\d10\WIN>flash
D:\d10\WIN>AFUWINx64.exe ..\ROM\D10.8M /p /b /n /r
+-----+
|              AMI Firmware Update Utility  v5.07.01              |
|      Copyright (C)2014 American Megatrends Inc. All Rights Reserved.      |
+-----+
Reading flash ..... done
Secure Flash enabled, recalculate ROM size with signature... Enable.
- FFS checksums ..... ok
Loading capsule to secure memory buffer ... done
Erasing Boot Block ..... done
Updating Boot Block ..... done
Verifying Boot Block ..... done
Erasing Main Block ..... done
Updating Main Block ..... done
Verifying Main Block ..... done
Erasing NVRAM Block ..... done
Updating NVRAM Block ..... done
Verifying NVRAM Block ..... done
D:\d10\WIN>_
```

2.4 Reboot system and Press to enter BIOS setup menu.

2.5 Select [Load default setting], then [Save & Exit Setup].